

IS THERE A PROPER LAND USE AND LAND COVER DATASET TO ASSESS THE HUMAN IMPACT ON CO₂ FLUXES IN THE PAN-AMAZON?

Graciela Tejada ^[1], Luana.S. Basso ^[1], Henrique.L.G. Cassol ^[3], Luciana.V. Gatti ^[1,2]

[1] Earth System Science Center (CCST), National Institute for Space Research (INPE), São José dos Campos, SP, Brazil

[2] Nuclear and Energy Research Institute (IPEN), SP, Brazil

[3] Remote Sensing Division, National Institute for Space Research, National Institute for Space Research (INPE), São José dos Campos, SP, Brazil

RESUMO: Na floresta Pan-Amazônica as principais emissões de CO₂ ocorrem por mudanças de uso e cobertura da terra (MUCT), principalmente do desmatamento e da degradação florestal. Para uma melhor compreensão do fluxo de CO₂ medido pelo projeto CARBAM, são necessários dados de MUCT multitemporais para a região Pan-Amazônica que reflitam o impacto humano. Comparamos brevemente as classes de MUCT de 2010 a 2018 do PRODES, TerraClass e MapBiomias Amazônia. As diferentes abordagens metodológicas do uso de uma máscara de desmatamento, tornam a classificação das classes MUCT diferentes. Apenas o MapBiomias Amazônia possui dados de MUCT para toda a Pan-Amazônia. Com base nas características de cada conjunto de dados de MUCT, oferecemos recomendações sobre como poderíamos juntá-los, incluindo outros estudos que consideram a vegetação secundária e a degradação para ter um conjunto de dados MUCT anual para a Pan-Amazônia.

Palavras-chave: Mudança no uso e cobertura da terra, Amazônia, emissões de CO₂

ABSTRACT: The main CO₂ emissions in the Pan-Amazon region come from land use and cover change (LUCC), mainly deforestation and degradation. To better understand the CO₂ fluxes along this region, it is necessary to assess if the CO₂ measurements, collected by the CARBAM project, have any relation with multitemporal LUCC data for the Pan-Amazon region that reflect the human impact. We briefly compared the LUCC data classes from 2010 to 2018 of the Deforestation Monitoring Program known as PRODES, TerraClass and MapBiomias Amazonia. The different methodological approach of using a mask of deforestation, make the LUCC classes classification different. Only MapBiomias Amazonia has LUCC for the whole Pan-Amazon. Based in each LUCC dataset characteristics we give recommendation on how we could join them including other studies which consider secondary vegetation and degradation to have an annual LUCC dataset for the Pan-Amazon.

Keywords: Land use and cover change, Amazon, CO₂ emissions

INTRODUCTION

In the Pan-Amazon region, the main CO₂ emissions come from land use and cover change (LUCC), especially from deforestation and degradation of natural forests (AGUIAR et al., 2016; TEJADA et al., 2016). The role of forests under climate change and deforestation needs to be understood in the current carbon balance at different scales. The lower-troposphere greenhouse gas (GHG) monitoring program “CARBAM project”, has been collecting bimonthly GHGs vertical profiles in four sites of the Amazon since 2010, filling a very important gap in regional GHGs measurements (GATTI et al., 2014). In order to study the potential relation between CO₂ data, collected by the CARBAM, and human induced deforestation and forest degradation, it is necessary to assess the feasibility of multitemporal LUCC data for the Pan-Amazon region that reflect the anthropogenic activities that influence the CO₂ emissions. Multitemporal LUCC datasets exist for Brazil and the Pan-Amazon region with different temporal scale and methodological approach. Here we briefly compare tree LUCC datasets classes to identify the potentialities or limitations in gathering the datasets for the Pan-Amazon countries. Also we give recommendations on how we could have an annual Pan-Amazon LUCC dataset to represent the CO₂ emissions.

MATERIALS AND METHODS

Our study area is the Amazon forest biome (Fig. 1). We briefly compared the LUCC classes from 2010 and 2018 of the Deforestation Monitoring Program known as PRODES (INPE, 2015) (even though this product is for deforestation), TerraClass (ALMEIDA et al., 2016) and MapBiomas Amazonia collection 2 (MAPBIOMAS, 2020). The spatial digital data of each dataset were cut with the CARBAM mask (Fig.1), to get the classes and calculate the area of each class within. To relate the classes, we used the comparison of MapBiomas Brazil and TerraClass made by NEVES et al., (2020) based on the FAO Land Cover Classification System (LCCS). The area and percentage of each LUCC class was calculated for the 2010-2018 period. We focus on the year 2014 (the last year of TerraClass) so we can compare all the datasets. As in the MapBiomas Amazonia many classes of the LCCS were missing, so we grouped them in the Reclassify column of Table 1.

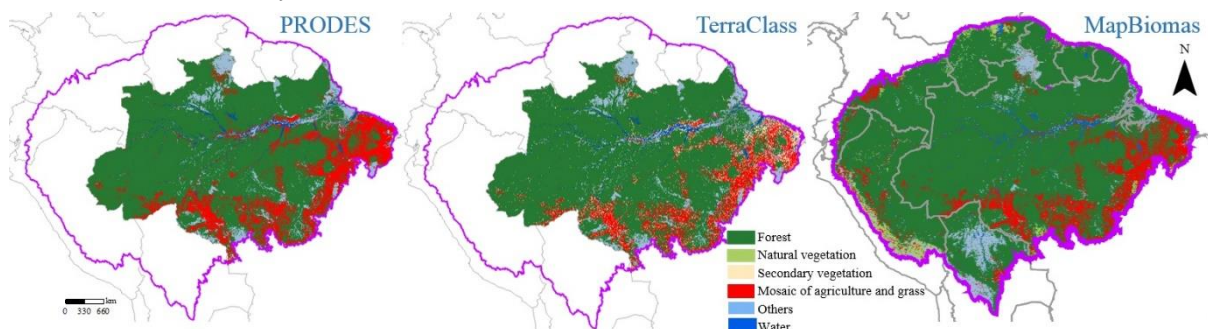


Figure 1—Land use and cover datasets of PRODES (INPE, 2015), TerraClass (ALMEIDA et al., 2016) and MapBiomas Amazonia (MAPBIOMAS, 2020) in 2014, the CARBAM mask our study area (in purple).

RESULTS AND DISCUSSION

LUCC classes comparison are shown in Table 1 and Figure 2. The temporal and spatial scale is the main limitation to build an annual LUCC dataset for the entire Pan-Amazon. PRODES that is an annual deforestation product (1988-2019) do not have the LUCC data of the deforested area. TerraClass classifies these areas, but only for the years 2004, 2008, 2010, 2012, and 2014. So we are missing the 2015-2018 period. TerraClass and PRODES are only for the Brazilian Amazon covering only 58% of the CARBAM mask, 42% is in the rest of the Pan-Amazon countries (see Figs. 1 and 2). MapBiomas Amazonia is an annual product from 1985-2018 covering the whole Pan-Amazon, but the “secondary vegetation” class is missing and the classification method does not use the deforestation mask. PRODES and TerraClass use the deforestation mask which means that a pixel that is deforested get out of the mask, not been classified as forest again. That is why the percentage of Forest is higher in MapBiomas 81% when compared with PRODES or TerraClass (both 74%) and deforestation is lower in MapBiomas Amazonia (Table 1). The classes of Non-forest natural vegetation and Others, also presented differences as shown in Fig. 2, as other studies found (e.g. NEVES et al., 2020) within the Brazilian Amazon.

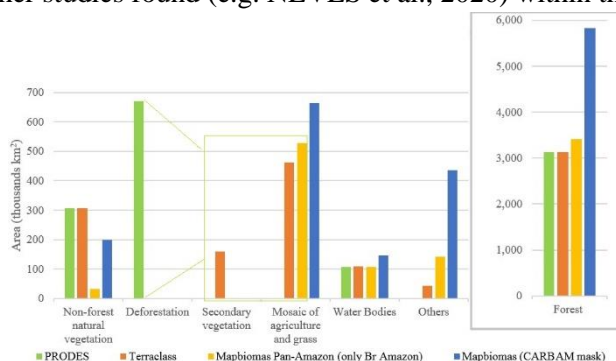


Figure 2 – Land use and cover change classes of PRODES (INPE, 2015), TerraClass (ALMEIDA et al., 2016) and MapBiomas Amazonia (MAPBIOMAS, 2020) for the Brazilian Amazon and only MapBiomas for the Pan-Amazon.

Table 1 – Land use and cover change classes of PRODES (INPE, 2015), TerraClass (ALMEIDA et al., 2016) and MapBiomias Amazonia collection 2 (MAPBIOMAS, 2020). The classes were grouped according to LCCS legend, but as in MapBiomias many classes were missing, we grouped them in the Reclassify column. The percentage of each class is for 2014 (the last year of TerraClass) and only for the Brazilian Amazon.

LCCS	PRODES (1988 to 2018) Brazilian Amazon			TerraClass (2004, 2008, 2010, 2012, 2014) Brazilian Amazon			MapBiomias Amazonia (1985 to 2018) Pan-Amazon			Reclassify			
Class name	Class name	Code	%	Class name	Code	%	Class name	Code	%	Class name			
Forest	Forest	1	74	Forest	1	74	Forest	3	80.7	Forest			
							Mangrove	5	0.1				
							Flooded forest	6	0.001				
Non-forest natural vegetation	Non-forest	3	7	Non-forest	14	7	Wetland	11	2	Non-forest natural vegetation			
							Grassland	12	0.1				
							Savanna Formation	4	0.7				
Secondary vegetation				Secondary vegetation	2	4				Secondary vegetation			
Planted forest				Silviculture	3	0.1				Planted forest			
Agriculture	Deforestation	4	16	Perennial Crop	6	0.03	Mosaic of Agriculture and Grass	21	13	Mosaic of agriculture and grass			
											Semi-perennial Crop	7	0.01
											Temporary crop	8	0.9
											Herbaceous pasture	5	7.8
Pasture				Shrubby pasture	4	2.2							
				Urban areas	10	0.11	Non vegetated area	22	0.1				
Mining				Mining	9	0.03							
Others	Non-forest	3	7.25	Others	11	1	Other non forest natural formation	13	3.3	Others			
Non-Observed				Non-Observed	12	0.7							
Water Bodies	Hydrography	2	2.53	Hydrography	15	2.56	River, Lake and Ocean	33	2.5	Water bodies			
							Glacier	34	0				

After this briefly comparison of LUCS classes we can make recommendations for joining the LUCS datasets to have an annual Pan-Amazon LUCS dataset. In the Brazilian Amazon, for Forest and Deforestation (larger than 6.25 ha), use the PRODES mask that has the best accuracy, almost 94% (MAURANO; ESCADA, 2019). For the LUCS of deforested areas, there is no TerraClass data after 2014, so we could use the annual MapBiomias data but including the data of secondary vegetation dynamics of SILVA JUNIOR et al. (2020) (based in MapBiomias Brazilian data). For the degradation that is inside the forest PRODES mask other studies as ASSIS et al. (2020) should be considered. For the rest of the Pan-Amazon countries, for Forest, Agriculture and grass, we could also use the MapBiomias Amazonia data, adding the Secondary vegetation using the same method of SILVA JUNIOR

et al. (2020). For degradation we could use the data of BULLOCK et al. (2020).

CONCLUSIONS

The comparison of PRODES, TerraClass and MapBiomas LUC classes show that they have different objectives, temporal and spatial scales. The different methodological approach of using a deforestation mask, make the LUC classes classification different. Only MapBiomas Amazonia has LUC for the whole Pan-Amazon, but does not consider the secondary vegetation and degradation dynamics. Based in each LUC dataset characteristics we give recommendation on how we could join them including other studies which consider secondary vegetation and degradation to have an annual LUC dataset for the Pan-Amazon.

INSTITUIÇÃO FINANCIADO E AGRADECIMENTOS

Projeto FAPESP (2018/18493-7).

REFERENCES

- AGUIAR, A. P. D.; VIEIRA, I. C. G.; ASSIS, T. O.; DALLA-NORA, E. L.; TOLEDO, P. M.; OLIVEIRA SANTOS-JUNIOR, R. A.; BATISTELLA, M.; COELHO, A. S.; SAVAGET, E. K.; ARAGÃO, L. E. O. C.; NOBRE, C. A.; OMETTO, J. P. H. Land use change emission scenarios: Anticipating a forest transition process in the Brazilian Amazon. **Global Change Biology**, v. 22, n. 5, p. 1821–1840, 2016.
- ALMEIDA, C. A. DE; COUTINHO, A. C.; CÉSAR, J.; MORA, D.; ADAMI, M.; VENTURIERI, A.; DINIZ, C. G.; DESSAY, N.; DURIEUX, L.; GOMES, A. R. High spatial resolution land use and land cover mapping of the Brazilian Legal Amazon in 2008 using Landsat-5 / TM and MODIS data. **ACTA AMAZONICA**, v. 46, n. 3, p. 291–302, 2016.
- ASSIS, T. O.; DE AGUIAR, A. P. D.; VON RANDOW, C.; MELO DE PAULA GOMES, D.; KURY, J. N.; OMETTO, J.; NOBRE, C. A. CO₂ emissions from forest degradation in Brazilian Amazonia. **Environmental Research Letters**, 15 jun. 2020.
- BULLOCK, E. L.; WOODCOCK, C. E.; SOUZA, C.; OLOFSSON, P. Satellite-based estimates reveal widespread forest degradation in the Amazon. **Global Change Biology**, p. gcb.15029, 6 mar. 2020.
- GATTI, L. V.; GLOOR, M.; MILLER, J. B.; DOUGHTY, C. E.; MALHI, Y.; DOMINGUES, L. G.; BASSO, L. S.; MARTINEWSKI, A.; CORREIA, C. S. C.; BORGES, V. F.; FREITAS, S.; BRAZ, R.; ANDERSON, L. O.; ROCHA, H.; GRACE, J.; PHILLIPS, O. L.; LLOYD, J. Drought sensitivity of Amazonian carbon balance revealed by atmospheric measurements. **Nature**, v. 506, n. 7486, p. 76–80, 2014.
- INPE. **Amazon Deforestation Monitoring Project (PRODES)**Sao Jose dos Campos, SP, Brazil, 2015. Disponível em: <<http://www.dpi.inpe.br/prodesdigital/prodes.php>>
- MAPBIOMAS. **Proyecto MapBiomas Amazonía - Colección [2.0] de los mapas anuales de cobertura y uso del suelo**. Disponível em: <<http://amazonia.mapbiomas.org/mapas-de-la-coleccion>>. Acesso em: 8 jul. 2020.
- MAURANO, L. E. P.; ESCADA, M. I. S. **Comparação Dos Dados Produzidos Pelo Prodes Versus Dados Do Mapbiomas Para O Bioma Amazônia**. Anais do XIX Simposio Brasileiro de Sensoramento Remoto. **Anais...Santos, SP, Brazil: 2019**Disponível em: <<https://proceedings.science/sbsr-2019/papers/comparacao-dos-dados-produzidos-pelo-prodes-versus-dados-do-mapbiomas-para-o-bioma-amazonia>>
- NEVES, A. K.; KÖRTING, T. S.; FONSECA, L. M. G.; ESCADA, M. I. S. Assessment of TerraClass and MapBiomas data on legend and map agreement for the Brazilian Amazon biome. **Acta Amazonica**, v. 50, n. 2, p. 170–182, 2020.
- SILVA JUNIOR, C. H. L.; HEINRICH, V. H. A.; FREIRE, A. T. G.; BROGGIO, I. S.; ROSAN, T. M.; DOBLAS, J.; ANDERSON, L. O.; ROUSSEAU, G. X.; SHIMABUKURO, Y. E.; SILVA, C. A.; HOUSE, J. I.; ARAGÃO, L. E. O. C. Benchmark maps of 33 years of secondary forest age for Brazil.

IX Simpósio da Pós-Graduação em Ciência do Sistema Terrestre
Instituto Nacional de Pesquisas Espaciais
São José dos Campos, Brasil
8 a 11 de Dezembro de 2020

Scientific Data, v. 7, n. 1, p. 269, 14 dez. 2020.

TEJADA, G.; DALLA-NORA, E.; CORDOBA, D.; LAFORTEZZA, R.; OVANDO, A.; ASSIS, T.; AGUIAR, A. P. Deforestation scenarios for the Bolivian lowlands. **Environmental Research**, v. 144, p. 49–63, jan. 2016.