



ELSEVIER

Cretaceous Research xx (2006) 1–16

CRETACEOUS
 RESEARCH

www.elsevier.com/locate/CretRes

First evidence of marine influence in the Cretaceous of the Amazonas Basin, Brazil

 D.F. Rossetti ^{a,*}, R.G. Netto ^b
^a INPE, Rua dos Astronautas 1758, Jardim da Granja-CP 515, 12245-970 São José dos Campos-SP, Brazil

^b PPGeo UNISINOS, Av. Unisinos, 950, 93022-000 São Leopoldo, RS, Brazil

Received 27 April 2005; accepted in revised form 6 October 2005

Abstract

An integrated investigation emphasizing sedimentological and ichnological studies of Cretaceous deposits of the Alter do Chão Formation, exposed in the western Amazonas Basin, was undertaken with the aim of determining depositional environments. Four facies associations attributed to upper shoreface, foreshore, delta mouth bar, and lower/middle shoreface-prodelta depositional environments are recognized. The upper shoreface deposits were deposited by storm flows. They are interbedded with highly bioturbated sandstones displaying *Thalassinoides*, *Planolites* and *Diplocraterion* traces. The foreshore deposits, which are coarser-grained than the shoreface strata, are characterized by tabular sandstones displaying planar or trough cross-lamination/stratification, wavy/flaser lamination, and parallel lamination. These strata also contain an abundance of trace fossils. The delta mouth bar deposits comprise upward-coarsening beds displaying a lobed geometry. The lower/middle shoreface-prodelta settings consist of well-stratified, very fine-grained sandstones and mudstones deposited mostly by storm action. A wave-dominated delta system that prograded into a marine-influenced basin is supported for the study area. Therefore, in contrast to previous interpretations, it seems that a widespread Cretaceous transgression resulted in the submergence of large continental areas in the north of Brazil, affecting sediment deposition even in the innermost portions of the intracratonic Amazonas Basin.

© 2006 Elsevier Ltd. All rights reserved.

Keywords: Cretaceous; Amazonas Basin; Marine influence; Sedimentary facies; Ichnology

1. Introduction

The distinction between open marine and continental strata in the geological record is, in general, straightforward, but the recognition of transitional depositional settings can be problematic because they produce sediments formed by a mixture of marine and non-marine processes. Interpretations are particularly problematic in successions that lack fossils, analysis of the depositional setting having to rely solely on an understanding of the physical sedimentary structures. Many papers published in recent years have contributed to our knowledge of the sedimentary imprint of marine processes, particularly involving tidal

currents and storm waves (e.g., Boersma and Terwindt, 1981; Dott and Bourgeois, 1982; Walker, 1984; Yang and Nio, 1985; McCrory and Walker, 1986; Arnott and Southard, 1990; Leckie and Singh, 1991; Nio and Yang, 1991; Shanley et al., 1992; Arnott, 1992, 1993; Cheel and Middleton, 1993; Hadley and Elliot, 1993; Amos et al., 1996). As a result, many deposits recorded in the literature previously as continental may be partly of marine origin.

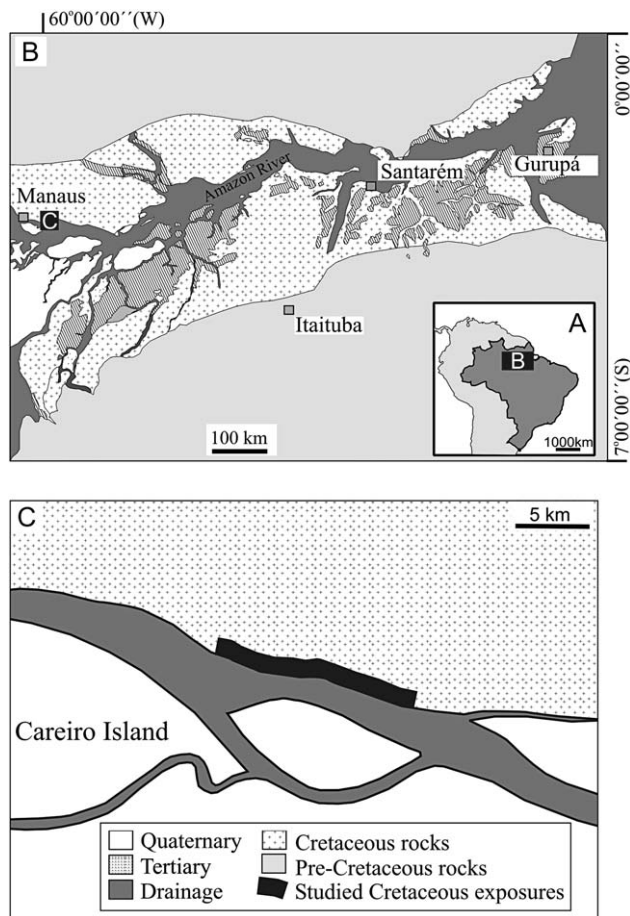
The sedimentological criteria that aid recognition of tidal and storm deposits have helped to provide new interpretations of many Cretaceous deposits exposed in the north Brazilian marginal basins, which are dominated by transitional marine deposits. Hence, a number of studies undertaken during the past ten years on exposures of Albian–Cenomanian rocks of the São Luís-Grajaú and Cameté (Marajó Graben System) basins, have demonstrated the significance of tidal currents and storm waves as dominant depositional agents, even in southernmost

* Corresponding author.

 E-mail addresses: rossetti@dsr.inpe.br (D.F. Rossetti), nettorg@euler.unisinos.br (R.G. Netto).

115 areas at the basin margins, located several hundreds of kilo-
 116 metres from the modern coastline (e.g., Rossetti, 1998; Rossetti
 117 et al., 2000; Rossetti and Santos Jr., 2003; Rossetti and Góes,
 118 2004). They have shown that shallow-marine to transitional en-
 119 vironments were extensive as a result of widespread marine in-
 120 cursions throughout these basins, in contrast to previous
 121 suggestions of an entirely continental origin (e.g., Petri and Fúl-
 122 faro, 1983). Transgressions of such magnitude should have had
 123 an influence on adjacent regions to the west in the intracratonic
 124 Amazonas Basin, which has been of low overall relief since at
 125 least the Cretaceous Period. However, no marine or marginal
 126 marine sediments have been recorded previously from the Cre-
 127 taceous of this basin. The 500-m-thick Alter do Chão Formation
 128 is composed of siliciclastic red beds (sandstones and mud-
 129 stones) that have been interpreted as continental in origin
 130 (e.g., Daemon, 1975; Dino et al., 1999), but a lack of widespread
 131 fossil collecting and sedimentological studies has precluded full
 132 recognition of the sedimentary processes that led to its
 133 development.

134 This paper provides a detailed description of the sediment-
 135 ary features preserved in the Alter do Chão Formation where
 136 it crops out along the left side of the Amazon River near
 137 Careiro Island, about 50 km to the east of Manaus, in the mid-
 138 dle of the Amazonas Basin (Fig. 1). Our investigation has
 139



169 Fig. 1. A–C, location maps of the study area in Amazonas State, northern Bra-
 170 zil; the band of exposures of Cretaceous rocks along the riverbank to the north
 171 of the Careiro Island is shown in C.

172 revealed a set of exposures with well-preserved physical and
 173 biogenic structures, allowing detailed interpretations of their
 174 mode of origin. Hitherto, studies of this nature had not been
 175 carried out on the formation, our knowledge of it having had
 176 to rely mostly on regional geological studies. In this paper,
 177 we integrate sedimentological and ichnological interpretations
 178 and conclude from these that the formation is not entirely con-
 179 tinental in origin, features suggesting marine influence being
 180 abundant throughout the exposures. Our data lead us to sug-
 181 gest that Cretaceous transgressions might have been much
 182 more widespread in Brazilian territory than previously
 183 thought, resulting in the submergence of large continental
 184 areas, even within intracratonic basins.

2. Geological framework

185 The Amazonas Basin covers an area of up to 500,000 km²,
 186 and is bounded by the Purus and Gurupá arcs to the west and
 187 east, which separate this basin from the Solimões and Marajó
 188 basins, respectively. It is limited to the north by the Guiana
 189 Shield and to the south by the Brazilian Shield. The basement
 190 comprises igneous, metamorphic and volcano-sedimentary
 191 rocks of the Maroni-Itacaiunas and Amazônia Central prov-
 192 inces, which correspond to the oldest rocks of the Amazon
 193 Craton (Teixeira et al., 1989; Tassinari and Macambira,
 194 1999; Tassinari et al., 2000). Near the Purus Arch, this basin
 195 is underlain by Proterozoic sedimentary rocks belonging to
 196 the Purus Group (Eiras et al., 1993).

197 The structure of the Amazonas Basin is defined by an east–
 198 west and a southwest–northeast orientated central trough,
 199 bounded by two platforms located to the north and south. Its
 200 origin is related to a rifting event controlled by Early Paleo-
 201 zoic intraplate extension. As the rift evolved, four main phases
 202 of deposition took place, which alternated with periods of ther-
 203 mal subsidence. The main trough, where the depocenter is lo-
 204 cated, contains four sedimentary successions, collectively up
 205 to 6500 m thick, which developed during the Ordovician–
 206 Early Devonian, Devonian–Early Carboniferous, Middle
 207 Carboniferous–Permian and Mesozoic–Cenozoic. The last
 208 succession is up to 500 m thick, and consists of the Javari
 209 Group (Cunha et al., 1994; Eiras et al., 1994), formed due to
 210 east–west extension associated with both the evolution of
 211 the South Atlantic Ocean and the Andean Cordillera. The Al-
 212 ter do Chão Formation, the subject of this paper, records the
 213 Cretaceous sedimentation of this group. Defined for the first
 214 time by Kistler (1954), it comprises red-coloured sandstones,
 215 mudstones, conglomerates and intraformational breccias, tra-
 216 ditionally attributed to high-energy, westward-flowing fluvial
 217 and lacustrine/deltaic systems (Daemon, 1975). Its Cretaceous
 218 age was first suggested on the basis of theropod teeth (Price,
 219 1960), with later papers considering it as Cenomanian–Maas-
 220 trichtian (Daemon and Contreras, 1971), and middle Albian–
 221 Turonian (Daemon, 1975). Subsurface information (e-logs and
 222 a few cores) from areas located a few kilometres from the lo-
 223 calities reported here led to the recognition of two sedimentary
 224 successions within the formation: an upper Aptian/lower Al-
 225 bian meandering to anastomosed fluvial and eolian unit; and
 226
 227
 228

an upper Cenomanian fluvio-deltaic unit (Dino et al., 1999), the latter including the deposits described here.

3. Sedimentological and ichnological descriptions

The Alter do Chão Formation is exposed in the study area along a series of riverbanks that are up to 20 m high and, in general, several tens of metres long. Despite their discontinuous nature, which makes stratigraphic correlation difficult, these deposits display several internal features that provide good insights into the depositional processes. Furthermore, the strata are sufficiently well exposed and well preserved in the lower and middle reaches of the sections to provide information on facies relationships and, in some cases, geometry, thus allowing discussions of the depositional environment. Unfortunately, micropaleontological and palynological data that could help with the interpretation of the depositional setting are unavailable, but an abundance of ichnofauna aids discussion of the depositional processes and environments.

The deposits studied are typically red beds that are bounded at the top by a discontinuity surface with a mottled soil horizon that locally displays lateritic concretions. This surface is overlain by yellowish, fine- to coarse-grained friable sands, tentatively attributed to the Plio-Pleistocene Post-Barreiras sediments by comparison with similar deposits exposed in northeastern Amazonia (e.g., Rossetti et al., 1989; Rossetti

and Góes, 2001). The exposures of the Alter do Chão Formation consist of moderately to well-sorted, fine- to coarse-grained, and locally conglomeratic, sandstones that are interbedded with thin layers of mudstones. A variety of sedimentary structures characterize the sandstones that, for descriptive purposes, can be regarded as 12 facies (Table 1). The mudstones are less variable, consisting of two sedimentary facies. The sandstones and mudstones can be organized into four facies associations, described below and summarized in Table 2. Facies associations A, B and D are widespread throughout the study area, while facies association C occurs only in the northwestern part, conformably overlying the other deposits.

3.1. Facies association A

These deposits (Fig. 2A–H) consist entirely of white to yellowish and light purple/red, very fine- to fine-grained sandstones that occur as a series of laterally continuous, tabular beds up to 3 m thick, with the whole association reaching up to 9 m thick. A variety of either well-stratified or massive sandy facies is present. Well-stratified sandstones form strata with lower boundaries that are typically undulating and erosional, and locally separated by thin mudstones or lags of mud chips and pebbles. Internally, these beds display large-scale, low-angle dipping strata (facies Su, see no. 1 in

Table 1
Summary of the sedimentary facies recognized in the study area, with the interpreted depositional processes

| Sedimentary facies | Description | Depositional processes |
|--------------------|---|---|
| Sqp | Well-sorted, fine-grained sandstone with quasi-planar lamination with frequent reactivation surfaces | Deposition of flat beds under variable upper flow regime with unidirectional and oscillatory motion |
| Su | Well-sorted, fine- to medium-grained sandstone with large scale, low-angle dipping stratification with frequent reactivation surfaces and/or mud drapes | Migration of large scale, but low amplitude bedforms under variable lower flow regime with unidirectional and oscillatory motion (the latter being subordinate) |
| Sw | Moderate to well-sorted, fine- to medium-grained sandstone with swaley cross-stratification and locally hummocky cross-stratification with frequent reactivation surfaces and/or mud drapes | Migration of sinuous-crested bedforms under variable, lower flow regime with unidirectional and oscillatory motion (with a greater contribution of the latter relative to facies Su) |
| Sx | Poorly to well-sorted, fine- to coarse-grained sandstone with planar and trough cross-stratification with frequent reactivation surfaces and/or mud drapes | Migration of straight- and sinuous-crested bedforms under unidirectional or variable lower flow regime with unidirectional and oscillatory motion (with a much greater contribution of the first relative to facies Sw) |
| Sl | Well-sorted, cross laminated-sandstone, locally with highly undulating set boundaries and internal reactivation surfaces/mud drapes | Migration of straight- and sinuous-crested bedforms (ripple scale) under unidirectional or variable lowest flow regime with unidirectional and oscillatory motion |
| Sb | Bioturbated sandstone | Loss of structure due to intense sediment deformation by biogenic reworking |
| Sp | Moderate to well-sorted, fine to coarse-grained sandstone with parallel lamination | Sand deposition under upper plane bed conditions |
| Sw/f | Well-sorted, fine- to medium-grained massive or cross-laminated sandstone interbedded with mudstone forming wavy and flaser lamination | Alternating mud deposition from suspension and bedload deposition under fluctuating flow energy |
| Sm | Moderate to well-sorted, very fine- to medium-grained massive sandstone | Rapid deposition, with no time for stratification of the sediments or post depositional destruction of the framework due to instabilities in the depositional setting |
| Sd | Moderate to well sorted, very fine- to medium-grained sandstone with soft sediment deformation including convolute folds and over-steep cross-strata. | Soft sediment deformation caused by water escape attributed to deposition at high sedimentation rates |
| Am | Massive, very fine-grained mudstone | Rapid accumulation in areas with high mud supply, soft sediment deformation |
| Al | Laminated mudstone | Mud settling from suspension in low energy depositional environments |

Table 2

Summary of the main characteristics of facies associations in the study area, with the interpreted depositional settings

| Facies association | Description | Depositional environment |
|--------------------|--|----------------------------------|
| A | Well-sorted, fine- to medium-grained sandstone bodies occurring as tabular, slightly undulating packages internally displaying a variety of undulating structures formed by combined storm flows (i.e., facies Sw, Sqp, and Su). Tabular and trough cross-stratified sandstones (facies Sx), cross-laminated sandstones (facies Sl) and hummocky cross-stratified sandstones (facies Sh) are locally present. Wave erosion is common. Degree of bioturbation may be very high, with main trace fossils including <i>Thalassinoides</i> , <i>Planolites</i> and <i>Diplocraterion</i> . | Upper shoreface |
| B | Tabular, well-sorted, medium to coarse-grained sandstone with planar and trough cross lamination/stratification (facies Sx), as well as wavy/flaser (facies Sw/f) and parallel lamination (facies Sp). Cross sets display internal reactivation surfaces with mud drapes separating foreset packages, and boundaries that are highly undulating. Opposed-dipping cross sets are locally present. Bioturbated sandstones (facies Sb), in which <i>Thalassinoides</i> are widespread, either as isolated burrows or complex networks of interconnecting branches associated with <i>Ophiomorpha</i> , <i>Planolites</i> , <i>Taenidium barretti</i> , and rare <i>Scoyenia</i> . | Foreshore |
| C | Moderate to well-sorted, very fine- to medium-grained, massive (facies Sm) or soft sediment deformed sandstones (facies Sd). Locally present are trough/tabular cross-stratified sandstone (facies Sx), swaley cross-stratification (facies Ss) and quasi-planar lamination (facies Sqp). The sandstones display lobate geometry, and are internally characterized by coarsening upward cycles. Lobes show depositional dip to the west/northwest and bi-directional flows pointing to the northwest and southeast. Reactivation surfaces and mud drapes are abundant within cross sets, as are combined flow laminations. <i>Taenidium barretti</i> , <i>Planolites</i> , occasional <i>Thalassinoides</i> and <i>Diplocraterion</i> occur. | Deltaic mouth bar |
| D | Alternation of massive, very fine-grained sandstones (facies Am) and laminated mudstones (facies Al) forming either fining or coarsening upward cycles. Fining upward cycles form slightly undulating beds with frequent internal truncation, locally forming swaley and hummocky cross stratification (facies Sw and Sh) that grade into quasi-planar lamination (facies Spq). Extremely bioturbated, but hard to identify individual traces, except for possible <i>Diplocraterion</i> (?) | Lower/middle shoreface/prodelta? |

Fig. 2C, D) or, less commonly, swaley cross-stratification (facies Sw; Fig. 2G), both of which become laterally undulating, forming quasi-planar laminations (facies Sqp; Fig. 2C–F). Small-scale, hummocky cross-stratification, inserted in facies Sw, is only locally observed (Fig. 2E, F). Laterally, these facies grade into sandstones with small scale cross-stratification (facies Sx) and cross-lamination (facies Sl) displaying undulating lower set boundaries and also abundant internal reactivation surfaces, locally with mud drapes (Fig. 2H). The undulating sandstones are locally cut by broad, shallow scours that are up to 5 m deep and several tens of metres wide that are filled by sandstones also showing undulating stratification as described above.

Interbedded with the stratified sandstones are highly bioturbated sandstones (facies Sb) that are fine-grained and well-sorted. The bioturbation is so intense that primary physical

structures are not recognizable. Despite the intensity, there is a dominance of *Thalassinoides*, *Diplocraterion* (Fig. 3A, B) and *Planolites* traces. Two different classes of *Thalassinoides* burrow system may be distinguished by the average diameter of the galleries: smaller (7 mm), and larger (16 mm).

Measurements of azimuth dips of the cross-stratified sandstones reveal bi-directional flows orientated to either the northwest or the southeast (Fig. 3C).

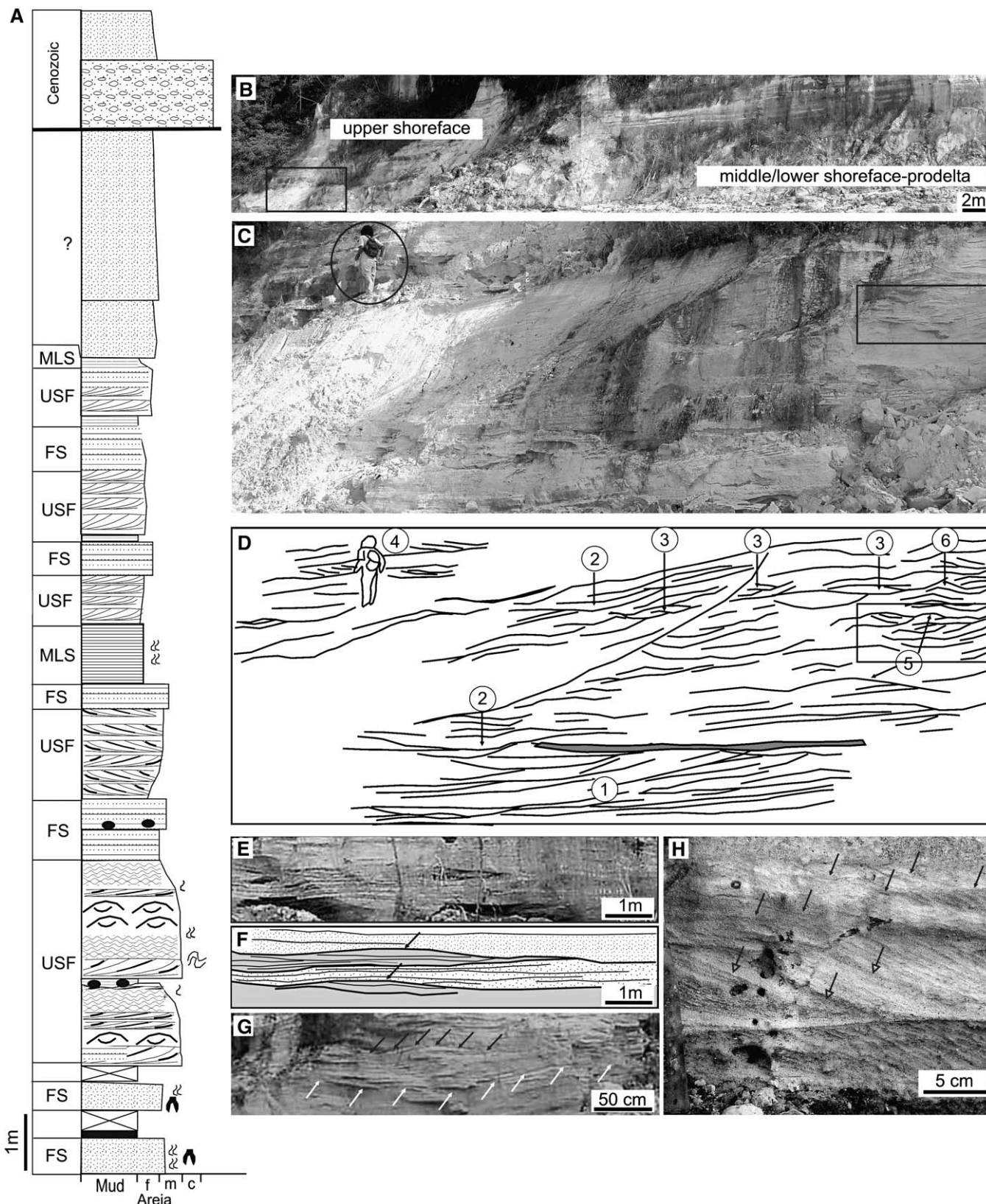
3.2. Facies association B

This facies association is frequent at the base of the sections, forming laterally continuous, tabular sandstone beds that are up to 1.5 m thick and may show slightly undulating, locally erosional tops. It grades both laterally and vertically into facies association A, from which it is distinguished by

Fig. 2. Middle/lower shoreface/prodelta and upper shoreface deposits (facies associations D and A, respectively). A, measured vertical profile representative of these deposits in the study area (USF, upper shoreface-facies association A; FS, foreshore-facies association B; MLS, lower/middle shoreface–prodelta? facies association D). B, general view of an outcrop showing lateral gradation from middle/lower shoreface/prodelta sandstones and mudstones (right) to upper shoreface sandstones (left). Box on left locates C and D. C, D, detail of left side of B, with sandstones displaying a variety of undulating sedimentary structures attributed to wave action: 1, large-scale, truncating, low-angle dipping stratification; 2, swaley cross-stratification; 3, combined flow cross-stratification with highly undulating lower set boundaries and internal reactivation surfaces; 4, cross-stratified sandstone with reactivation surfaces and mud drapes; 5, slightly concave-up undulating stratification that truncates underlying laminae at a very low angle, similar to hummocky cross-stratification; 6, chevron stratification (figure for scale is 1.60 m tall; box in C and D locates G). E, F, detail of upper shoreface sandstones consisting of undulating, quasi-planar strata (facies Sqp) that become laterally convex upward (arrows), forming hummocky cross-stratification; patterns in F indicate successive beds defined by sharp undulating surfaces; note truncation of the strata below the hummocks. G, detail of swaley cross-stratification (see box on right-hand side of C and D for location); white arrows indicate a broad swale at the base of the strata; black arrows indicate strata that are slightly convex-up, indicating small-scale hummocky cross-stratification. H, medium-scale cross-sets with reactivation surfaces (open arrows) mantled by several cross-laminated sets with undulating set boundaries (closed arrows).

457
458
459
460
461
462
463
464
465
466
467
468
469
470
471
472
473
474
475
476
477
478
479
480
481
482
483
484
485
486
487
488
489
490
491
492
493
494
495
496
497
498
499
500
501
502
503
504
505
506
507
508
509
510
511
512
513

514
515
516
517
518
519
520
521
522
523
524
525
526
527
528
529
530
531
532
533
534
535
536
537
538
539
540
541
542
543
544
545
546
547
548
549
550
551
552
553
554
555
556
557
558
559
560
561
562
563
564
565
566
567
568
569
570



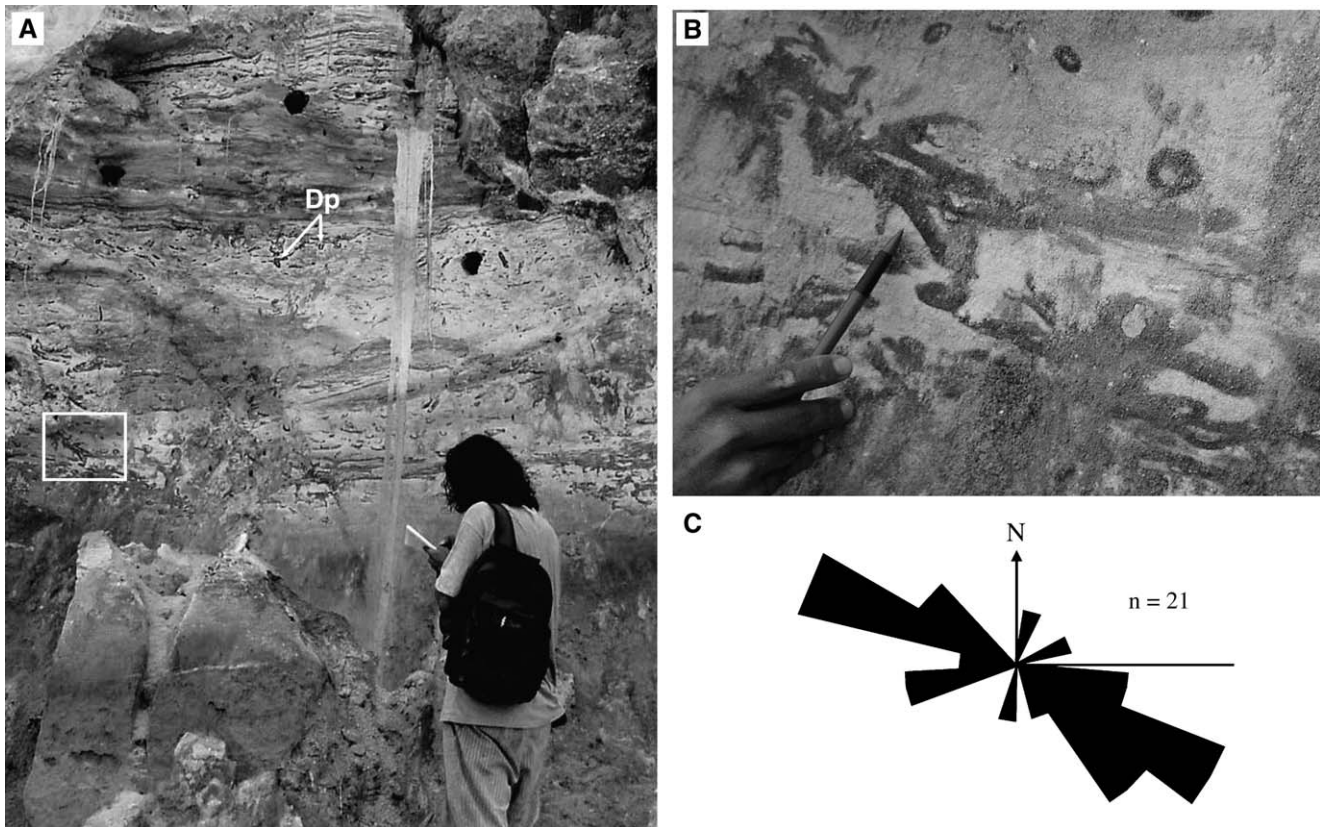


Fig. 3. A, general view of upper shoreface deposits characterized by highly bioturbated sandstones (facies Sb; Dp = *Diplocraterion*). B, detail of A illustrating *Thalassinoides* (see box in A for location). C, palaeocurrent distribution obtained from cross-stratified sandstones in upper shoreface deposits, indicating bi-directional, northwest/southeast-orientated flows.

the coarser grain size, forming thickening-upward successions. The sandstones are well sorted and, in general, fine- to medium-grained, though beds with coarse grain sizes are also frequent, in which case quartz granules and mud clasts are dispersed. Five sedimentary facies occur in this association, including, in order of abundance, bioturbated sandstone (Sb), planar and trough cross-laminated and cross-stratified sandstone (facies Sl and Sx, respectively), wavy/flaser laminated sandstone (facies Sw/f), and parallel-laminated sandstone (facies Sp). Facies Sl and Sx display mud drapes (Fig. 4A), undulating set boundaries and internal reactivation surfaces (Fig. 4B), as described in the other facies associations. Opposed-dipping cross sets are locally present. The sandstones in facies Sw/f are either massive or incipiently cross-laminated and display frequent symmetrical scours highlighted by mud layers (Fig. 4C).

A typical feature of all facies in this association is the variable degree of bioturbation, which can be very intense, as in facies Sb. Most of the deposits are reworked by the abundant, but monospecific *Thalassinoides* suite (Fig. 4D, E), which occur either as isolated burrows or as complex networks of inter-connecting branches. Occasional *Ophiomorpha* may also be present (Fig. 4F). *Taenidium barretti* (Fig. 4H), *Planolites* (Fig. 4G), and rare *Scoyenia* (Fig. 4I), define the *Taenidium barretti* suite, overprinted by (Fig. 4H) or interbedded with (Fig. 4G) the *Thalassinoides* suite.

3.3. Facies association C

These deposits are characterized by well-sorted, very fine- to medium-grained sandstones, typically displaying a lobate geometry (Fig. 5A–C). Individual lobes are, in general, less than 2 m thick and up to 60 m long, and they may show an overall westward/northwestward depositional dip.

The sandstones are internally organized into coarsening-upward successions (Fig. 5A), as revealed by an inverse grading from very fine- to medium-grained sands or by a downward transition into massive mudstones. Where exposures allowed sufficient observation, the sandstone lobes were seen to be amalgamated, forming thicker sandy nuclei, which become laterally subdivided into several smaller lobes defined by thin (a few cm) argillite beds. Within an individual nucleus, the sandstones are either massive (facies Sm) or display soft sediment deformation (facies Sd; Fig. 5G), characterized mostly by convolute folds and over-steep cross-strata. Towards the margins, where the lobes are better defined, the sandstones are typically well-stratified, showing medium-scale (sets 0.2–0.3 cm thick, exceptionally 0.5 m thick) trough/tabular (Fig. 5D, E) and, less commonly, swaley cross stratification (facies Sx and Sw, respectively). Occurring with these structures at the lobe bases and edges are abundant tabular and trough cross-laminations (facies Sl). Palaeocurrent directions obtained from these strata record a wide

+ MODEL

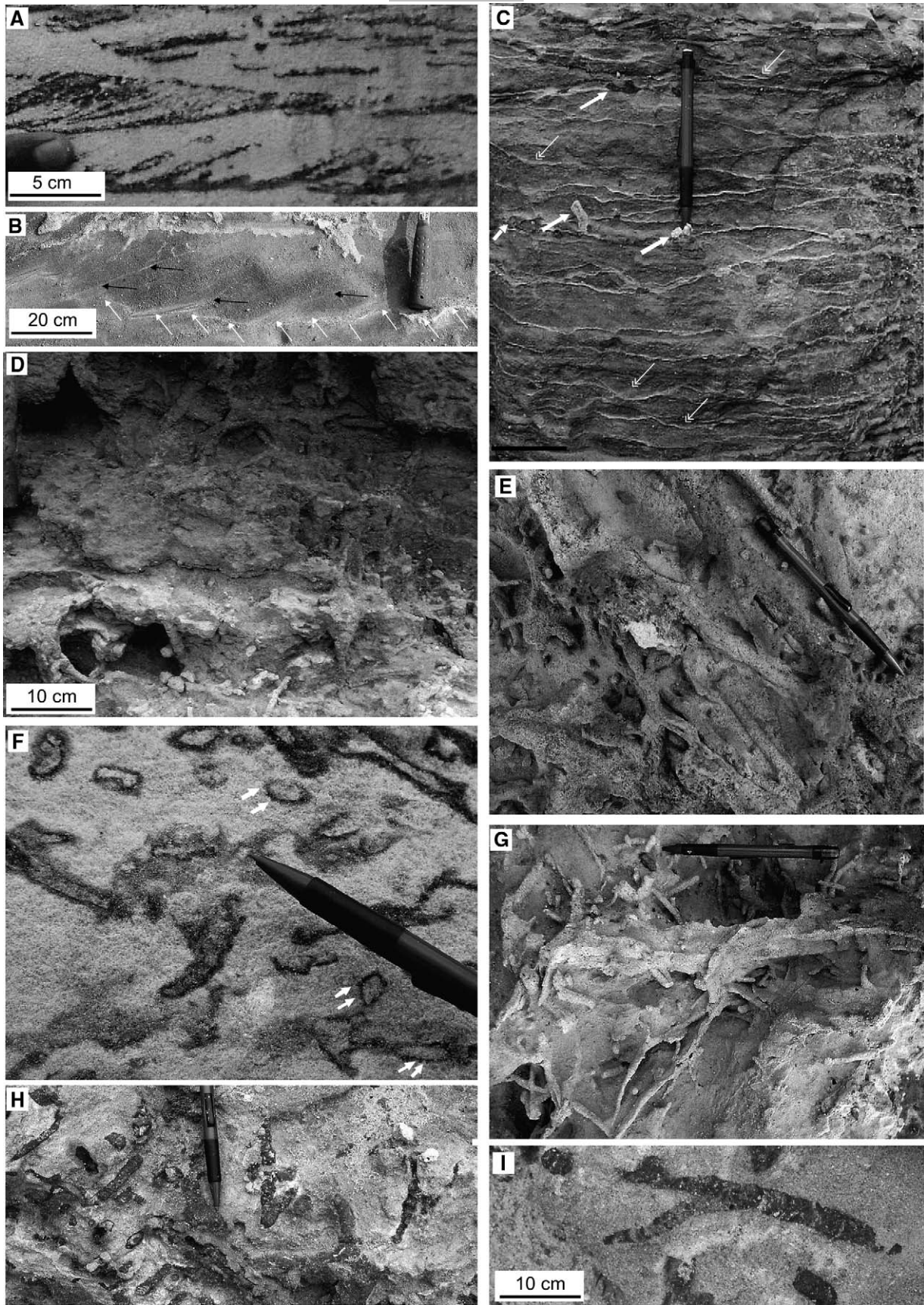
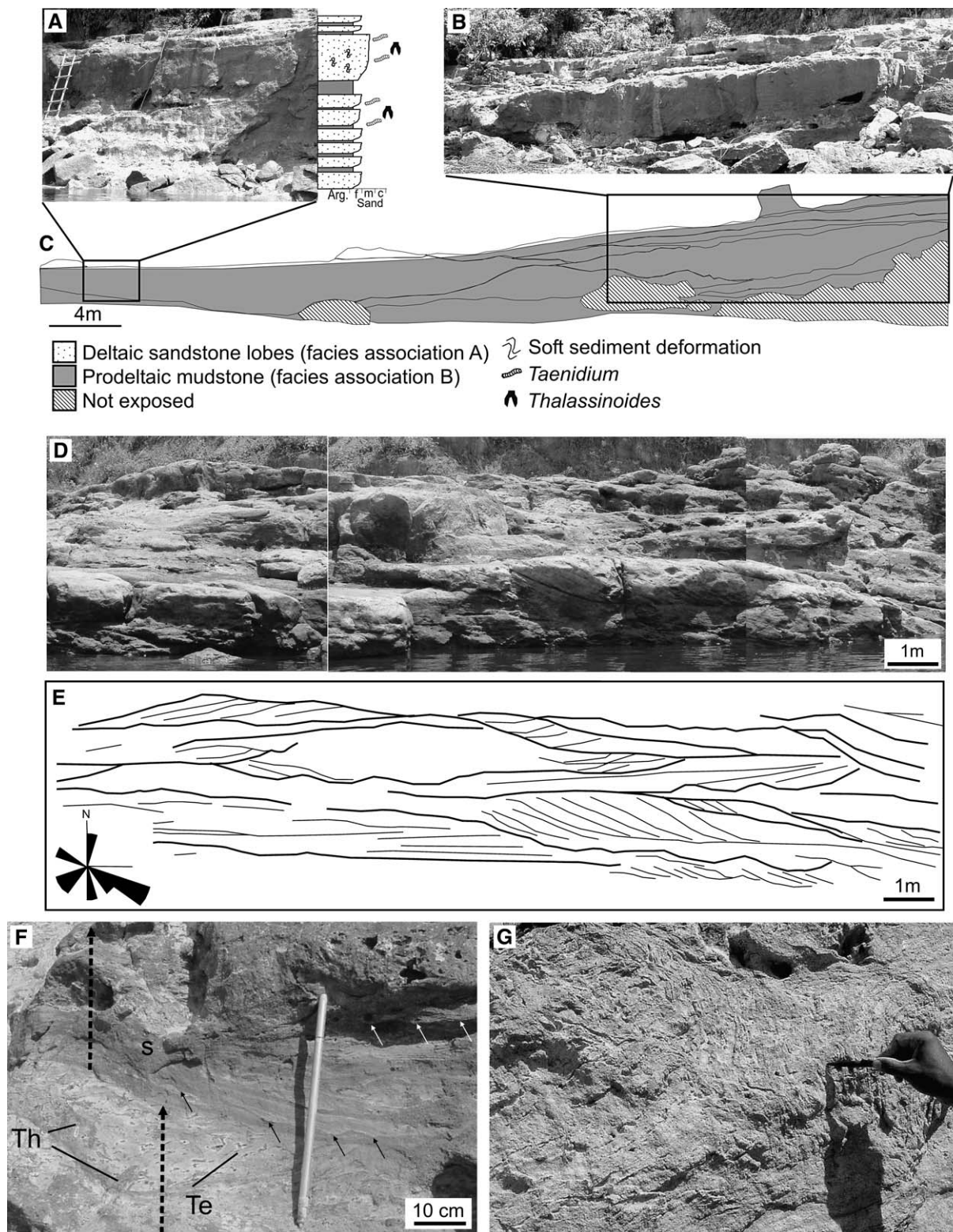


Fig. 4. Foreshore deposits (facies association D). A, low angle cross-lamination mantled by mud drapes. B, small-scale cross-stratification displaying undulating lower boundaries (white arrows) and internal reactivation surfaces locally with mud drapes (black arrows). C, wavy to flaser (light, undulating laminae) heterolithic sandstones typical of this facies association (white arrows with single head indicate trace fossils; those with double head indicate symmetrical scours); crenulated appearance of mud layers is due to presence of diminutive ripple marks (black arrows). D, E, branched traces of *Thalassinoides* in profile and plan views respectively. F, *Ophiomorpha*; white arrows indicate pellets surrounding trace walls. G, a mixture of *Planolites* and *Taenidium barretti*. H, *Taenidium barretti*. I, *Scoyenia*. Pen is 15 cm long.



799
800
801
802
803
804
805
806
807
808
809
810
811
812
813
814
815
816
817
818
819
820
821
822
823
824
825
826
827
828
829
830
831
832
833
834
835
836
837
838
839
840
841
842
843
844
845
846
847
848
849
850
851
852
853
854
855

856
857
858
859
860
861
862
863
864
865
866
867
868
869
870
871
872
873
874
875
876
877
878
879
880
881
882
883
884
885
886
887
888
889
890
891
892
893
894
895
896
897
898
899
900
901
902
903
904
905
906
907
908
909
910
911
912

Fig. 5. Delta mouth bar deposits (facies association A). A–C, lobate geometry; note the typical coarsening upward successions in A, and the amalgamation of several lobes in C that dip slightly to the left of the sketch (i.e., to the west). D, E, photograph, with corresponding drawing, of a section characterized by amalgamated sandstone lobes displaying internal cross-stratification that dips in opposite directions, i.e., to the right (west) and left (east); these strata indicate a wide variation of flow, but with a main southeast-orientated mode (shown in left-hand corner; number of measurements, 8). F, detail of parts of two coarsening-upward successions (dashed arrows), illustrating finer grain-sizes at the base of the upper cycle displaying combined flow ripple cross laminations characterized by highly undulating lower set boundaries (black and white arrows); note also in this horizon the symmetrical scour caused by wave erosion (s) and intense bioturbation in the sandstone from the top of the lower cycle, where *Thalassinoides* (Th) and *Taenidium barretti* (Te) dominate. G, deformed sandstone (Facies Sd) from the nuclei of the lobes.

distribution of the flow, but with a mainly southeast-orientated mode (Fig. 5E).

A typical feature of the cross-sets is the presence of frequent reactivation surfaces mantled with mud drapes, as observed in the cross-sets of the other facies associations. In medium-scale cross-sets, these surfaces define foreset packages averaging 5–10 cm thick. The lower set boundaries of both medium- and small-scale strata are undulating, forming broad, shallow scours. Cross-lamination structures with highly undulating lower set boundaries and abundant reactivation surfaces may have evolved from quasi-planar laminations (facies Sqp) (Fig. 5F); in these cases, wavy-cut erosional scours are frequent.

The top of the beds or even the entire beds may be bioturbated, forming facies Sb (bioturbated sandstones). Recognizable trace fossils characterize an assemblage dominated by *Taenidium barretti* and *Planolites*. (Fig. 6A, B) and occasional, but locally abundant, small, flattened *Thalassinoides* galleries (Fig. 6A). Beds with a *Diplocraterion* ichnofabric are also observed (Fig. 6C, D). The ichnofabric is entirely dominated by horizontally-sectioned U-burrows with vertical spreiten, many revealing the curved end of the burrows. Burrow boundaries are invariably sharp-walled, suggesting colonization of firmgrounds (Pemberton and Frey, 1985; Bromley, 1996; Buatois et al., 2001).

3.4. Facies association D

This association forms units up to 3 m thick and includes fine-grained facies, consisting mostly of argillites, and very

fine- to fine-grained sandstones. The strata form tabular to slightly undulating beds up to 0.2–0.3 m thick, which are interbedded with facies association A (Fig. 2A) or C (Fig. 5A–C). Internally, the lithologies are arranged into either cycles of sandstones that grade upward into mudstones or mudstones that grade up into sandstones. The mudstones display red to light brown colors, are mostly silty, and are either laminated (Al) or massive (Am). Laminated mudstones are interbedded with white or yellow, very-fine grained sandstones showing parallel and low-angle, quasi-planar laminations (Facies Sp). In these cases, the beds are undulating and display bases and tops that are slightly concave and convex, respectively, forming swaley and, locally, hummocky cross-stratification (facies Sw). Massive silty mudstones locally may show wavy, erosional surfaces superposed by successive smaller-scale scours (up to only few cm wide). The degree of bioturbation might be very high in the massive muddy lithologies, but individual traces could not be identified, except for spreiten-like, sub-vertical traces resembling *Diplocraterion* (?). Some beds, though, are only locally bioturbated.

4. Interpretation of sedimentary processes

Deposition by highly oscillatory flows is revealed by the dominance of different styles of cross-strata characterized by undulating lower set boundaries and abundant internal reactivation surfaces with mud drapes. Bi-directional flows, as indicated by palaeocurrent data, are also compatible with this interpretation. Two possibilities are currently considered here

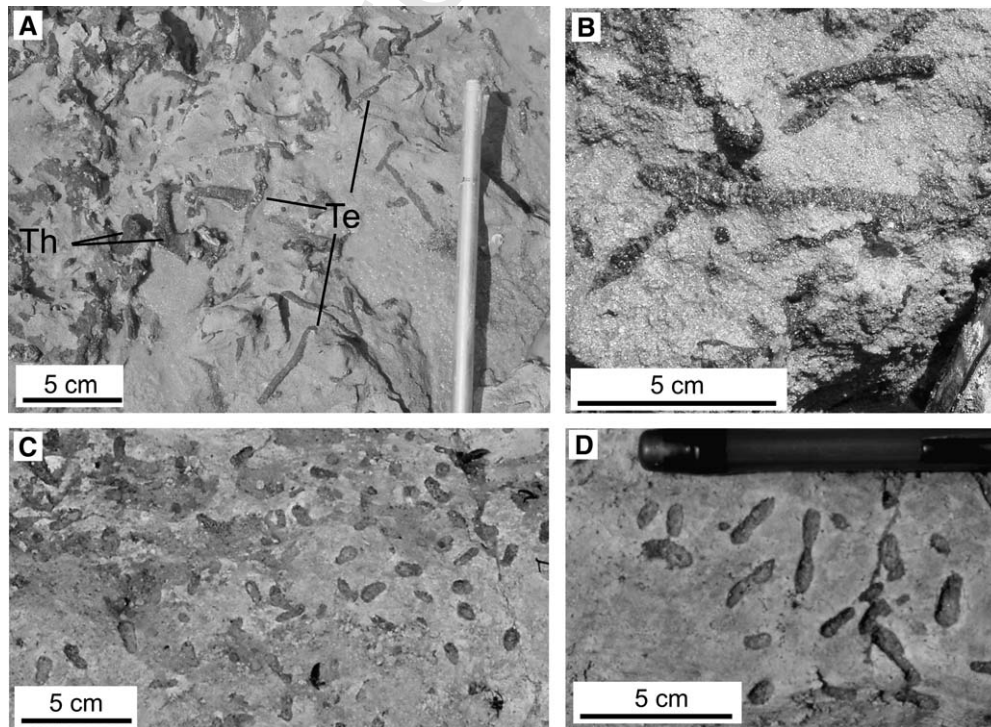


Fig. 6. Trace fossils typical of deltaic mouth bar deposits. A, sandstones from the top of a coarsening-upward cycle, with abundant trace fossils dominated by *Thalassinoides* (Th) and *Taenidium barretti* (Te). B, detail of *Taenidium barretti*. C, a view of the top of a sand bed with abundant *Diplocraterion*. D, detail of *Diplocraterion* from the surface shown in C. All figures show the trace fossils in plan view.

as the most likely causes: tidal currents and waves. Reactivation surfaces and mud drapes separating foreset packages are commonly recorded in association with tidal currents (Mowbray and Visser, 1984; Chakraborty and Bose, 1990; Simpson and Eriksson, 1991). However, several workers have claimed that similar features might be also due to wave action (e.g., Raaf et al., 1977; Arnott, 1992). In fact, differentiating between these processes in the geological record can be highly problematic, particularly in cases where there is a mixture of tidal and wave processes (e.g. Johnson and Baldwin, 1986; Harris and Eriksson, 1990; Amos et al., 1995; Colquhoun, 1995).

Interpreting the sedimentary signature of tidal currents is facilitated only when reactivation surfaces/mud drapes form a succession of alternating thicker and thinner foreset bundles that can be related to diurnal and monthly tidal periodicities (e.g. Allen, 1968; Yang and Nio, 1985; Kreisa and Moiola, 1986; Koster et al., 1987; Leckie and Singh, 1991). These features were not observed in the study area, but this absence cannot be used to preclude a tidal influence, as many ancient deposits attributed to tidal processes throughout the world do not show such diagnostic structure, even in subtidal settings where development of tidal bundles are more likely (Clifton, 1983; Yang and Nio, 1985; Koster et al., 1987).

Thus, although a tidal influence cannot be completely ruled out in this instance, the association of sedimentary features favours a wave-dominated influenced environment. This is suggested by the abundance of highly undulating structures, including swaley cross-stratification, with locally associated hummocky cross-stratification, and quasi-planar lamination. These features are considered typical of either oscillatory or combined flows with varying dominance of the unidirectional and orbital components. In particular, swaley cross-stratification indicates the action of larger than fair-weather waves, suggesting a storm-influenced setting (e.g., Allen and Pound, 1985; McCrory and Walker, 1986; Plint and Walker, 1987; Duke and Prave, 1991; Plint and Norris, 1991; Hadley and Elliot, 1993). This structure records the migration of low relief bedforms under storm-generated, combined flows (e.g., McCrory and Walker, 1986). The gradation from swaley cross-stratification to quasi-planar lamination and, locally, hummocky cross-stratification, is predicted in phase diagrams of combined flows, attesting to constant changes in the intensity of the unidirectional and oscillatory components (e.g., Nøttvedt and Kreisa, 1987; Arnott, 1992).

Considering this interpretation, the cross-sets displaying abundant reactivation surfaces and mud drapes are interpreted here to be more likely related to wave action than to tidal currents. These features are attributed to complex, short-term orientations of the flow and have been recorded in association with combined flows in many other storm settings (e.g., Swift et al., 1983; Nøttvedt and Kreisa, 1987; Arnott and Southard, 1990). The quasi-planar lamination may have formed during periods of upper flow regime and when the oscillatory motion was stronger than the unidirectional one (Arnott, 1992). Coexisting asymmetrical and symmetrical scours are also consistent with combined flows. In particular, cross-sets with reactivation

surfaces and highly undulating lower boundaries are features of combined flow bedforms (e.g., Raaf et al., 1977). In this instance, the gradation of these structures from quasi-planar laminations records laterally decreasing flow energy.

The fact that the interbedded sandstone and argillite layers are not in sharp contact, as expected in tidal deposits (e.g. Visser, 1980), but rather grade vertically, is taken as further evidence in support of wave action in the study area, with the grading being attributed to waning energy flows associated with the passage of storms. The upward transition from large-scale, low-angle dipping strata to swaley and combined flow cross-strata is consistent with this process. Similar features have been observed in association with upper shoreface Cretaceous deposits in the São Luís-Grajaú Basin (e.g. Rossetti, 1997; Rossetti et al., 2000).

5. Discussion of the depositional settings

The sedimentological and ichnological data do not support the presence of continental palaeoenvironments in the Alter do Chão Formation as exposed in the study area. As discussed above, the set of sedimentary facies points to the prevalence of wave processes which, in association with the ichnological attributes, suggest deposition in environments not far from a shoreline and under the influence of significant wave (i.e., storm) action.

Although waves do form in some continental settings, such as in lakes and, locally, at the confluence of fluvial channels, the wave-influenced deposits exposed in the study area cannot be related to purely continental settings. This conclusion is based on the dominance of both wave-influenced sedimentary structures and of a *Thalassinoides* trace-fossil suite.

Thalassinoides is perhaps the most common burrow in ancient shallow marine and marginal marine environments, inhabiting dominantly silty-sandy substrates (Pemberton et al., 1992a, 2001). These burrows are assumed to have been produced by opportunistic, deposit-feeding thalassinidean crustaceans in post-Paleozoic rocks and by their ancestors, or by a crustacean with similar behaviour, in Paleozoic rocks (Sheenan and Schiefelbein, 1984; Watkins and Coorough, 1997; Ekdale and Bromley, 2003). By comparison, modern galleries similar to *Thalassinoides* are produced by thalassinidean shrimps that never abandon their burrows, growing-up inside and enlarging the burrow system, being the most common burrowing organisms of marine intertidal and shallow subtidal environments (Griffis and Suchanek, 1991). Although rare, *Thalassinoides* is also found in deep marine environments (Sheenan and Schiefelbein, 1984; Uchman, 1995; Buatois et al., 2001). Its facies-crossing character is a consequence of the opportunistic behaviour of a tracemaker able to support episodic or constant environmental changes (Wightman et al., 1987; Pemberton and Wightman, 1992). Although the geological record of *Thalassinoides* is overwhelmingly restricted to marine and brackish-water successions, there is one exception: Shukla et al. (2002) reported the presence of *Thalassinoides* in Quaternary deltaic and fluvial silt and sand deposits, apparently without marine influence. The only organisms that can produce

1141 similar burrows in continental settings are crabs, but in this
1142 case the galleries differ from those described here because
1143 they are much simpler, shallower and with fewer branches.
1144 Thus, the occurrence of *Thalassinoides* in the sedimentary re-
1145 cord supports the inference of a depositional setting under
1146 the influence of marine processes. *Thalassinoides* became par-
1147 ticularly widespread from the Mesozoic onwards, when their
1148 burrow systems were large and became more complex, forming
1149 mazes and boxworks (Frey, 1975; Bromley, 1996).

1150 The complex arrangement of *Thalassinoides* burrows ob-
1151 served in facies association A, including burrow systems of
1152 different sizes, probably represents colonization by two major
1153 classes of individuals in a single population, revealing juvenile
1154 recruitment. This population strategy is common in brackish-
1155 water settings as a response to daily changes in controlling
1156 ecologic parameters dominated by extreme salinity fluctua-
1157 tions. Benthic communities of substrates affected by frequent
1158 salinity fluctuations, as occur in brackish-water systems, tend
1159 to consist of opportunistic elements with prevalent dwelling
1160 and feeding strategies (Ekdale et al., 1984; Pemberton and
1161 Wightman, 1992; Beynon and Pemberton, 1992; Pemberton
1162 et al., 1992b, 2001; Buatois et al., 1998; Gingras et al.,
1163 1999). The large burrows and reduced-size galleries of *Thalas-*
1164 *sinoidea* in the same horizon, as recorded in this facies associ-
1165 ation, are thus comparable to brackish-water ichnofaunas
1166 (Wightman et al., 1987; Pemberton and Wightman, 1992;
1167 Pemberton et al., 2001; Buatois et al., 2005).

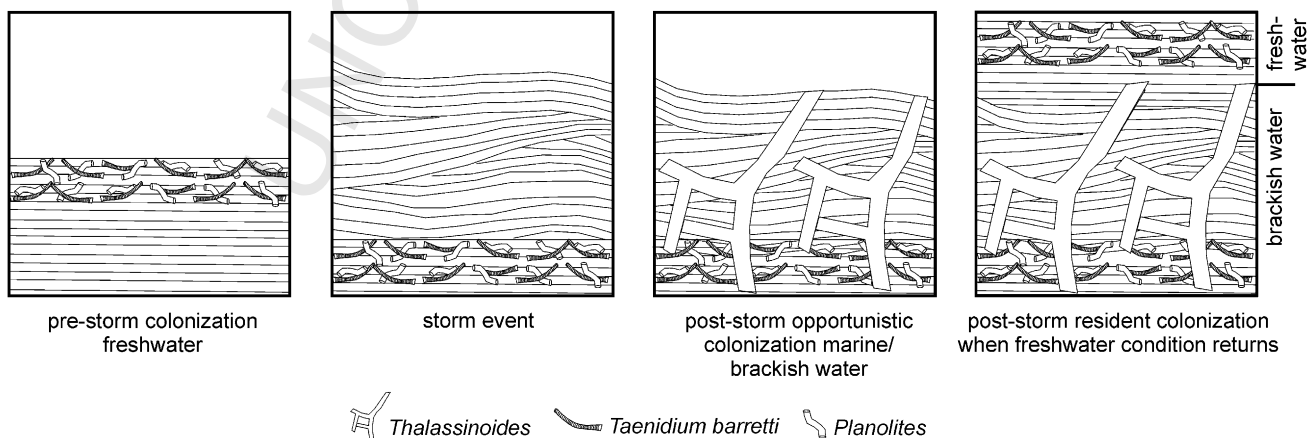
1168 The highly bioturbated, monospecific *Thalassinoides* suite,
1169 as recorded particularly in facies association B, is consistent
1170 with this proposed depositional setting. Intense bioturbation
1171 *Thalassinoides* networks are expected to develop in moderate
1172 to low energy, shallow-marine to marginal-marine environ-
1173 ments affected by occasional salinity fluctuations (stenohaline
1174 to polyhaline: Pemberton et al., 2001; Netto and Rossetti,
1175 2003). In addition to the *Thalassinoides* suite, the presence of
1176 *Diplocraterion* in the deposits studied supports the influence
1177 of marine conditions, recording periods with a dominance of
1178 saline waters. On the other hand, the *Taenidium barretti* trace
1179 fossil in facies associations B and C attests to periods of pre-
1180 dominantly freshwater influence, as this ichnospecies is

1198 characteristic of freshwater conditions (Buatois et al., 1998,
1199 2002; Netto and Rossetti, 2003). When the salinity gradient rea-
1200 ches freshwater levels, a physiological barrier is erected to ma-
1201 rine organisms and even those capable of enduring strong salinity
1202 fluctuations, such as the deep-burrowing *Thalassinoides*-
1203 producers, cannot survive. The successive alternation of *Taeni-*
1204 *dium barretti* with *Thalassinoides* in facies association B
1205 suggests relatively high salinity during coastal evolution, which
1206 is also compatible with the attribution of these deposits to fore-
1207 shore settings (Fig. 7), as proposed in the following section.

1208 Scarce, small and flattened *Thalassinoides* burrows, as oc-
1209 cur in facies association C, are also good representatives of
1210 meso- to oligohaline waters in brackish-water settings (Pem-
1211 berton et al., 2001; Netto and Rossetti, 2003; Buatois et al.,
1212 2005). However, the dominance of *Taenidium barretti* with
1213 only a few *Thalassinoides* in this facies association indicates
1214 a prevalence of freshwater to subaerial substrates (*Scoyenia*
1215 Ichnofacies: Pemberton and Frey, 1985; Buatois et al., 1998,
1216 2002; Buatois and Mángano, 2004). The sharp-walled burrow
1217 boundaries of *Diplocraterion* observed in facies association C
1218 suggest colonization of firmgrounds and testify to substrate ex-
1219 humation and temporary exposure before the next marine ingres-
1220 sion (MacEachern et al., 1992; Pemberton et al., 2001;
1221 Netto and Rossetti, 2003).

1222 A marine influx, probably resulting from storm events,
1223 would have brought in an opportunistic marine fauna, repre-
1224 sented by the *Thalassinoides*-dominated ichnofauna, which
1225 rapidly colonized the substrate. Considering the very low trace
1226 fossil diversity and the mixed occurrence of saline and fresh-
1227 water traces, it is suggested that deposition took place in envi-
1228 ronments experiencing a mixture of saline and freshwater
1229 flows, which are typical of brackish-water environments. In
1230 fact, it is common to observe the *Thalassinoides* suite cross-
1231 cutting substrates previously occupied by the *Taenidium-*
1232 *Planolites* suite, and vice-versa (Fig. 7).

1233 The lack or scarcity of bioturbation in the strata with
1234 abundant sedimentary structures formed by wave action in
1235 the study area is to be expected, as the density of bioturbation
1236 varies from high in quiet, protected settings to rare in high-
1237 energy settings. Therefore, information from physical and



1192 Fig. 7. Schematic diagram showing pre- and post-event colonization controlled by storm events in the Alter do Chão Formation. 1250

biogenic structures are complementary, and indicate the presence of depositional environments exposed to strong wave action during storms laterally coexisting with more protected settings.

Considering the limited lateral extent of the studied transect (only up to 15 km in length), reconstructing the depositional system is difficult. However, our suggested ichnological interpretation of mixed (i.e., freshwater and marine) water inflows conforms to a setting located in the transitional marine realm. The four facies associations conform to storm-influenced deltaic environments. A deltaic setting is particularly suggested by facies association C, which contains well-developed progradings and lobes indicative of deposition accompanying a rapid loss in energy related to the entrance of flows into a standing body of water, a process typical of distributary mouth bars. Massive and deformed sandstones in this association are consistent with a setting with a high sand inflow and gravity instability (e.g., Coleman, 1988; Orton and Reading, 1993; Glover and O'Beirne, 1994). Mouth bars deposits are characterized by high interstitial water pressure, which leads to intense fluidization and liquefaction, (e.g., Mills, 1983; Elliott, 1986; van Loon and Brodzikowski, 1987; Coleman, 1988), processes that produced the massive and deformed sandstones (facies Sm and Sd). In addition, mouth bars are places characterized by intense gravity instabilities promoted by the overloading of sands on muds (Shepard, 1955; Coleman and Prior, 1983; Elliott, 1986; Coleman, 1988). Mouth bars of many modern and ancient deltaic settings display such features (e.g., Nemeč et al., 1988; Edwards, 1995). The small size of the sand lobes

developed in the study area may be explained in the context of delta lobes entering shallow waters.

Two depositional models may be invoked to explain the strata studied: a wave-dominated delta and a wave-dominated estuary. The prevalence of brackish-water conditions favours an estuarine interpretation. Tidal channel deposits, however, which typify estuarine complexes, were not recognized in the study area. Furthermore, tidal currents are the main agents responsible for sediment deposition within estuaries, even in wave-dominated ones (e.g., Dalrymple et al., 1992), but the study area bears no conclusive evidence for tidal sedimentation.

Although an estuarine interpretation cannot be completely ruled out, the absence of criteria in support of tidal sedimentation, added to the abundance of sedimentary structures attributed to both fair-weather and storm waves, leads us to propose that a wave-dominated deltaic setting is more likely (Fig. 8). Like estuarine settings, wave-dominated deltas are characterized by a mixture of fluvial and marine inflows, thus stressed environments with brackish water conditions may develop.

Facies association D records the muddiest and therefore the lowest energy depositional setting of the study area. When these deposits occur interfingering with facies association C, they are interpreted as prodeltaic sediments. However, a large proportion of these deposits is genetically connected with facies associations A and B, when they are attributed to lower/middle shoreface settings. This interpretation is consistent with the presence of undulating sedimentary structures dominated by storm wave action. These structures suggest a low

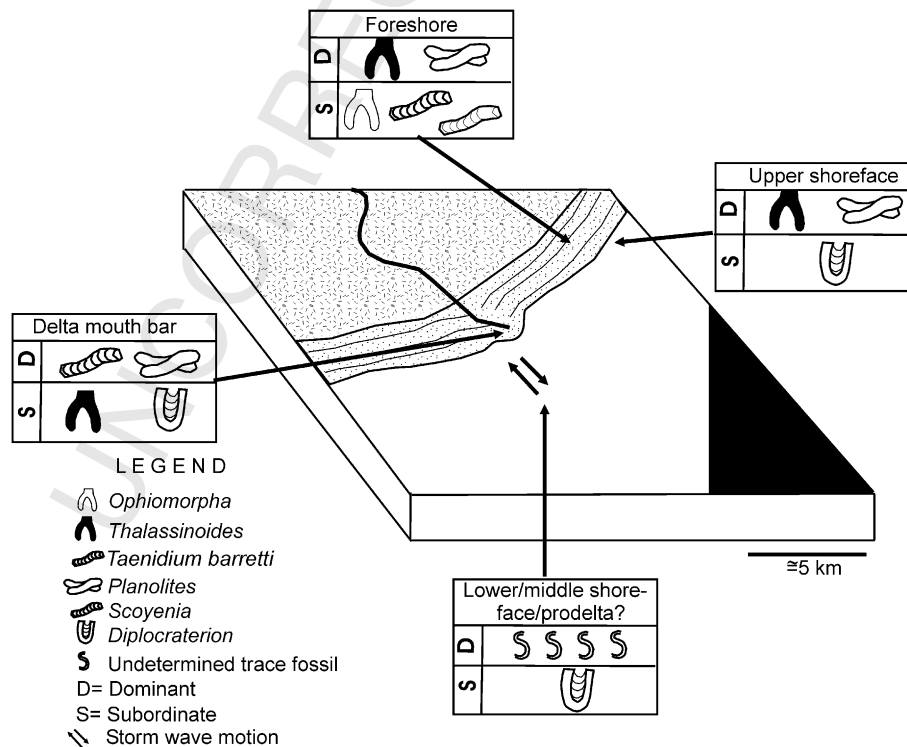


Fig. 8. A schematic block diagram illustrating the storm wave-dominated deltaic depositional system proposed for the Cretaceous deposits in the study area, with an indication of the ichnological characteristics of each sub-environment.

energy setting located below the fair-weather wave base but periodically affected by storm waves, favourable for preservation of hummocky cross-stratification (e.g. Walker, 1984; McCrory and Walker, 1986; Nøttvedt and Kreisa, 1987; Cheel and Leckie, 1993) and for intense biogenic reworking. Deposits of this facies association with scarce bioturbation probably record sedimentation in areas still under the effect of storm waves.

The spatial transition from facies association D to A and B further supports the above interpretation. Facies association A is also dominated by undulating structures, mostly represented by swaley cross-stratification. This structure is formed in a high energy environment above the storm wave base and close to the fair-weather wave transition, which within the proposed environmental context, is probably representative of the upper shoreface, as recorded in many other similar settings (Dott and Bourgeois, 1982; Walker, 1984; Allen and Pound, 1985; McCrory and Walker, 1986; Plint and Walker, 1987; Duke and Prave, 1991; Plint and Norris, 1991; Hadley and Elliot, 1993). The amalgamated nature of the sandstones bodies in facies association A is consistent with an upper shoreface setting, where erosion is frequent (Dott and Bourgeois, 1982; Brenchley et al., 1986).

The dominance of fair-weather wave structures in facies association B indicates deposition above fair-weather wave base, characterizing a shallower environment than indicated by facies associations A and D, being attributed to foreshore settings (e.g., Clifton et al., 1971; Driese et al., 1991). Thus, any deposits formed by storm action were subsequently reworked by fair-weather waves between storms. The abundance of fair-weather wave structures in these strata, as well as the presence of parallel lamination that might record beach face deposition, is consistent with this interpretation. Fair-weather conditions contributed to the widespread development of *Thalassinoides*, which reached their greatest abundance in these deposits. In this context, *Thalassinoides* represents the opportunistic post-storm colonization (Pemberton et al., 1992c, 2001), subsisting in the substrate while the salinity values permitted (oligohaline waters: see Wignall, 1991; Netto and Rossetti, 2003). The *Taenidium-Planolites* suite is a relict of the original resident non-marine endofauna, characterizing pre-storm colonization, when freshwater conditions apparently prevailed (Fig. 7). The fact that facies association B overlies upper shoreface strata, forming coarsening-upward successions, in addition to its coarser-grained nature relative to those deposits, further supports a setting located closer to the coastline, adjacent to the shoreface.

Unfortunately, our palaeocurrent data are too few to provide a reliable determination of flow pattern. However, it is possible to infer a coast orientated roughly in a northeast–southwest direction and a continental influx from the northwest, as suggested by the main southeastward mode recorded from delta lobe deposits. This coastline would have been affected by storm waves oscillating between northwest and southeast. Marine conditions might, therefore, have prevailed to the east or southeast of the study area. If this is correct, then correlatable deposits located in those areas should record

increased evidence of marine influence, a hypothesis that must be tested in future investigations.

6. Conclusion

The traditional view that the Cretaceous deposits of the intracratonic Amazonas Basin are entirely continental in nature might be a result of a lack of detailed sedimentological studies. The sedimentological and ichnological data presented herein suggest that, after the Permo-Carboniferous marine incursion that gave rise to the Itaituba limestones, the Amazonas Basin might also have experienced a marine incursion during the Cretaceous. The magnitude of this transgression and the route by which marine waters entered the basin are issues that need to be discussed in the light of a much larger volume of information. However, the data available from our study allow us to suggest a palaeoenvironmental model in which continental flows from the northwest formed a wave-dominated delta system that prograded into a basin connected to the marine realm to the east or southeast. This model must be tested by further investigations of deposits of the Alter do Chão Formation in the central and eastern areas of the Amazonas Basin. Despite the limited potential for the recovery of fossils, given the red-bed nature of the formation, it is necessary to search for localities that might yield microfossils in order to improve the depositional model.

Uncited references

Buatois et al., in press

Acknowledgments

This work was financed by IBAMA-PNUD BRA/00/008 through the Strategic Study “Scientific Bases for the Conservation of the Várzea: Identification and Characterization of Biogeographic Regions” (PROVARZEA/MPEG/FADESP). We thank Antonio Emídio Santos Jr. for assistance and companionship, as well as Ana Albernaz and Luís Mangabeira for encouragement and logistic support during our fieldwork. We are also grateful to the referees, J.R. Ineson and A. Ruffell, for their helpful comments on the original manuscript, and D.J. Batten for his editorial work.

References

- Allen, J.R.L., 1968. Current Ripples and their Relation to Patterns of Water Flow and Sediment Motion. North-Holland, Amsterdam, xxx pp.
- Allen, P.A., Pound, C.J., 1985. Storm sedimentation. *Journal of the Geological Society*, London 142, 411–412.
- Amos, C.L., Barrie, J.V., Judge, J.T., 1995. Storm-enhanced sand transport in a macrotidal setting, Queen Charlotte Islands, British Columbia, Canada. In: Flemming, B.W., Bartholomä, A. (Eds.), *Tidal Signature in Modern and Ancient Sediments*. International Association of Sedimentologists, Special Publication 24, 53–70.
- Amos, C.L., Li, M.Z., Choung, K.S., 1996. Storm-generated, hummocky stratification on the outer-Scotian Shelf. *Geo-Marine Letters* 16, 85–94.

- 1483 Arnott, R.W.C., 1992. Ripple cross-stratification in swaley cross-stratified
1484 sandstones of the Chungo Member, Mount Yamnuska, Alberta. *Canadian*
1485 *Journal of Earth Sciences* 29, 1802–1805.
- 1486 Arnott, R.W.C., 1993. Quasi-planar-laminated sandstone beds of the Lower
1487 Cretaceous Bootlegger Member, north-central Montana: evidence of
1488 combined-flow sedimentation. *Journal of Sedimentary Research* 63,
1489 488–494.
- 1490 Arnott, R.W.C., Southard, F.J.B., 1990. Exploratory flow-duct experiments on
1491 combined flow bed configurations, and some implications for interpreting
1492 storm-event stratification. *Journal of Sedimentary Petrology* 60, 211–219.
- 1493 Beynon, B.M., Pemberton, S.G., 1992. Ichnological signature of a brackish
1494 water deposit: an example from the Lower Cretaceous Grand Rapids For-
1495 mation, Cold Lake Oil Sands area, Alberta. In: Pemberton, S.G. (Ed.),
1496 Applications of Ichnology to Petroleum Exploration: a Core Workshop
1497 Society of Economic Paleontologists and Mineralogists, Core Workshop
1498 17, 99–221.
- 1499 Boersma, J.R., Terwindt, J.H.J., 1981. Neap-spring tide sequences of internal
1500 shoal deposits in a mesotidal estuary. *Sedimentology* 28, 151–170.
- 1501 Brenchley, P.J., Romano, M., Gutierrez-Marco, J.C., 1986. Proximal and distal
1502 hummocky cross-stratified facies on a wide Ordovician shelf in Iberia. In:
1503 Knight, R.J., McLean, J.R. (Eds.), *Shelf Sands and Sandstones*. Canadian
1504 Society of Petroleum Geologists. *Memoir* 2, 241–255.
- 1505 Bromley, R.G., 1996. Trace fossils. Biology, taphonomy and applications, sec-
1506 ond ed. Chapman and Hall, London, 361 pp.
- 1507 Buatois, L.A., Mángano, M.G., 2004. Animal-substrate interactions in fresh-
1508 water environments: applications of ichnology in facies and sequence
1509 stratigraphic analysis of fluvio-lacustrine successions. In: McIlroy, D.
1510 (Ed.), *The Application of Ichnology to Palaeoenvironmental and Strati-*
1511 *graphic Analysis*. Geological Society, London, Special Publication 228,
1512 311–335.
- 1513 Buatois, L.A., Mángano, M.G., Maples, C.G., Lanier, W.P., 1998. Allostrati-
1514 graphic and sedimentologic applications of trace fossils to the study of
1515 incised estuarine valleys: an example from the Virgilian Tonganixie Sand-
1516 stone Member of eastern Kansas. *Current Research in Earth Sciences* 241,
1517 1–27.
- 1518 Buatois, L.A., Mángano, M.G., Aceñolaza, F.G., 2002. Trazas fósiles. *Museo*
1519 *Egidio Ferruglio, Trelew, Special Publication* 1, 382 pp.
- 1520 Buatois, L.A., Mángano, M.G., Sylvester, Z., 2001. A diverse deep-marine ich-
1521 nofauna from the Eocene Tarcau Sandstone of the eastern Carpathians, Ro-
1522 mania. *Ichnos* 8, 23–62.
- 1523 Buatois, L.A., Gingras, M., McEachern, J.A., Mángano, M.G., Zonneveld,
1524 J.-P., Pemberton, S.G., Netto, R.G., Martin, A. Colonization of brackish-
1525 water systems through time: evidence from the trace-fossil record. *Palaios*
1526 20, in press.
- 1527 Chakraborty, C., Bose, P.K., 1990. Internal structures of sandwaves in a tide-
1528 storm interactive system: Proterozoic Lower Quartzite Formation, India.
1529 *Sedimentary Geology* 67, 133–142.
- 1530 Cheel, R.J., Leckie, D.A., 1993. Hummocky cross-stratification. In:
1531 Wright, V.P. (Ed.), *Sedimentary Review*, 1. Blackwell Scientific Publica-
1532 tions, Oxford, pp. 103–122.
- 1533 Cheel, R.J., Middleton, G.V., 1993. Directional scours on a transgressive sur-
1534 face: examples from the Silurian Whirlpool Sandstone of southern Ontario,
1535 Canada. *Journal of Sedimentary Petrology* 63, 392–397.
- 1536 Clifton, H.E., 1983. Discrimination between subtidal and intertidal facies in
1537 Pleistocene deposits, Willapa Bay, Washington. *Journal of Sedimentary*
1538 *Petrology* 53, 353–369.
- 1539 Clifton, H.E., Hunter, R.E., Phillips, L., 1971. Depositional structures and pro-
1540 cess in the non-barred high energy nearshore. *Journal of Sedimentary*
1541 *Petrology* 41, 651–670.
- 1542 Coleman, J.M., 1988. Dynamic changes and processes in the Mississippi River
1543 delta. *American Association of Petroleum Geologists, Bulletin* 100, 999–
1544 1015.
- 1545 Coleman, J.M., Prior, D.B., 1983. Deltaic sand bodies. *American Association*
1546 *of Petroleum Geologists, Education Course Notes Series* 15, 171 p.
- 1547 Colquhoun, G.P., 1995. Siliciclastic sedimentation on a storm- and tide-influ-
1548 enced shelf and shoreline: the Early Devonian Roxburgh Formation, NE
1549 Lachlan Fold Belt, southeastern Australia. *Sedimentary Geology* 97,
1550 69–98.
- 1551 Cunha, P.R.C., Gonzaga, F.G., Coutinho, L.F.C., Feijó, F.J., 1994. Bacia do
1552 Amazonas. *Boletim de Geociências da Petrobrás* 8, 47–55.
- 1553 Daemon, R.F., 1975. Contribuição à datação da Formação Altér do Chão,
1554 Bacia do Amazonas. *Revista Brasileira de Geociências* 5, 58–84.
- 1555 Daemon, R.F., Contreras, C.J.A., 1971. 25 Congresso Brasileiro de Geologia.
1556 Sociedade Brasileira de Geologia, São Paulo, vol. 3, pp. 79–88 (abstract).
- 1557 Dalrymple, R.W., Zaitlin, B.A., Boyd, R., 1992. Estuarine facies models:
1558 conceptual basis and stratigraphic implications. *Journal of Sedimentary*
1559 *Petrology* 62, 1130–1146.
- 1560 Dino, R., Silva, O.B., Abrahão, D., 1999. 5 Simpósio Sobre o Cretáceo do Bra-
1561 sil. UNESP, Serra Negra, São Paulo, pp. 557–565 (expanded abstract).
- 1562 Dott, R.H., Bourgeois, J., 1982. Hummocky stratification: significance of its
1563 variable bedding sequences. *Geological Society of America, Bulletin* 93,
1564 663–680.
- 1565 Driese, S.G., Fischer, M.W., Easthouse, K.A., Marks, G.T., Gogola, A.R.,
1566 Schoner, A.E., 1991. Model for genesis of shoreface and shelf sandstone
1567 sequences, southern Appalachians: paleoenvironmental reconstruction
1568 of an Early Silurian shelf system. In: Swift, D.J.P., Oertel, G.F.,
1569 Tillman, R.W., Thorne, J.A. (Eds.), *Shelf Sand and Sandstone Bodies, Geo-*
1570 *metry, Facies and Sequence Stratigraphy*. International Association of
1571 *Sedimentologists, Special Publication* 14, 309–338.
- 1572 Duke, W.L., Prave, A.R., 1991. Storm- and tide-influenced prograding shore-
1573 line sequences in the Middle Devonian, Mahantango Formation, Pennsylv-
1574 anian. In: Smith, D.G., Reinson, G.E., Zaitlin, B.A., Rahmani, R.A.
1575 (Eds.), *Clastic Tidal Sedimentology*. Canadian Society of Petroleum Geol-
1576 ogists, *Memoir* 16, 349–370.
- 1577 Edwards, M.B., 1995. Differential subsidence and preservation potential of
1578 shallow-water Tertiary sequences, northern Gulf Coast Basin, USA. In:
1579 Plint, A.G. (Ed.), *Sedimentary Facies Analysis*. International Association
1580 of *Sedimentologists, Special Publication* 22, 265–281.
- 1581 Eiras, J.F., Becker, C.R., Souza, E.M., Gonzaga, F.G., Silva, J.G.F., Daniel,
1582 L.M.F., Matsuda, N.S., 1993. Revisão estratigráfica da bacia Sedimentar
1583 do Solimões, norte do Brasil. Unpublished internal report, Petrobras/
1584 DENOR, Belém.
- 1585 Eiras, J.F., Becker, C.R., Souza, E.M., Gonzaga, F.G., Silva, J.G.F.,
1586 Daniel, L.M.F., Matsuda, N.S., Feijó, F.J., 1994. Bacia do Solimões. *Bole-*
1587 *tim de Geociências da Petrobras* 8, 17–45.
- 1588 Ekdale, A.A., Bromley, R.G., 2003. Paleoethologic interpretation of complex
1589 *Thalassinoides* in shallow-marine limestones, Lower Ordovician, southern
1590 Sweden. *Palaeogeography, Palaeoclimatology, Palaeoecology* 192,
1591 221–227.
- 1592 Ekdale, A.A., Bromley, R.G., Pemberton, S.G., 1984. Ichnology: the Use
1593 of Trace Fossils in Sedimentology and Stratigraphy. Society of Economic
1594 Paleontologists and Mineralogists, *Short Course Notes* 15, 317 pp.
- 1595 Elliott, T., 1986. Deltas. In: Reading, H.G. (Ed.), *Sedimentary Environments*
1596 *and Facies*. Blackwell, Oxford, 615 pp.
- 1597 Frey, R.W., 1975. *The Study of Trace Fossils*. Springer, New York, 562 pp.
- 1598 Glover, B.W., O'Beirne, A.M., 1994. Anatomy, hydrodynamics and deposi-
1599 tional setting of a Westphalian C lacustrine delta complex, West Midlands,
1600 England. *Sedimentology* 41, 115–132.
- 1601 Gingras, M.K., Pemberton, S.G., Saunders, T., Clifton, H.E., 1999. The ichnol-
1602 ogy of modern and Pleistocene brackish-water deposits at Willapa Bay,
1603 Washington: variability in estuarine settings. *Palaios* 14, 352–374.
- 1604 Griffis, R.B., Suchanek, T.H., 1991. A model of burrow architecture and tro-
1605 phic modes in thalassinidean shrimp (Decapoda: Thalassinidea). *Marine*
1606 *Ecology Progress Series* 79, 171–183.
- 1607 Hadley, D.F., Elliot, T., 1993. The sequence-stratigraphic significance of
1608 erosive-based shoreface sequences in the Cretaceous Mesaverde Group
1609 of northwestern Colorado. In: Posamentier, H.W., Summerhayes, C.P.,
1610 Haq, B.W., Allen, G.P. (Eds.), *Sequence Stratigraphy and Facies Associa-*
1611 *tions*. International Association of Sedimentologists, Special Publication
1612 18, 521–535.
- 1613 Harris, C.W., Eriksson, K.A., 1990. Allogenic controls on the evolution of
1614 storm to tidal shelf sequences in the early Proterozoic Uncompahgre
1615 Group, southwest Colorado, USA. *Sedimentology* 37, 189–213.
- 1616 Johnson, H.D., Baldwin, C.T., 1986. Shallow siliciclastic seas. In:
1617 Reading, H.G. (Ed.), *Sedimentary Environments and Facies*. Blackwell
1618 Scientific Publications, Oxford, pp. 229–282.

- Kistler, P., 1954. Historical résumé of the Amazonas Basin. Unpublished internal report, Petrobras DENOR, Belém.
- Koster, E.H., Currie, P.J., Brinkman, D., Johnson, P., Braman, D., 1987. Sedimentology and Paleontology of the Upper Cretaceous Judith River/Bearpaw Formations at Dinosaur Provincial Park, Alberta. Geological Association of Canada Annual Meeting, Field Trip Guidebook 10, 130 pp.
- Kreisa, R.D., Muiola, R.J., 1986. Sigmoidal tidal bundles and other tide-generated sedimentary structures of the Curtis Formation, Utah. Geological Society of America, Bulletin 97, 381–387.
- Leckie, D.A., Singh, C., 1991. Estuarine deposits of the Albian Paddy Member (Peace River Formation), and lowermost Shaftesbury Formation, Alberta, Canada. *Journal of Sedimentary Petrology* 61, 825–849.
- van Loon, A.J., Brodzikowski, K., 1987. Problems and progress in the research on soft-sediment deformations. *Sedimentary Geology* 50, 167–193.
- McCroly, U.C.L., Walker, R.G., 1986. A storm and tidally-influenced prograding shoreline – Upper Cretaceous Milk River Formation of southern Alberta, Canada. *Sedimentology* 33, 47–60.
- MacEachern, J.A., Raychaudhuri, I., Pemberton, S.G., 1992. Stratigraphic applications of the *Glossifungites* ichnofacies: delineating discontinuities in the rock record. In: Pemberton, S.G. (Ed.), *Applications of Ichnology to Petroleum Exploration: a Core Workshop*. Society of Economic Paleontologists and Mineralogists, Core Workshop 17, 169–198.
- Mills, P.C., 1983. Genesis and diagnostic value of soft-sediment deformation structures – a review. *Sedimentary Geology* 35, 83–104.
- Mowbray, T., Visser, M.J., 1984. Reactivation surfaces in subtidal channel deposits, Oosterschelde, southeast Netherlands. *Journal of Sedimentary Petrology* 54, 811–824.
- Nemec, W., Steel, R.J., Gellerg, U., Collinson, V.D., Presthohm, E., Oxnevad, I.E., 1988. Anatomy of collapsed and re-established delta front in Lower Cretaceous of eastern Spitsbergen: gravitational sliding and sedimentation processes. *American Association of Petroleum Geologists, Bulletin* 72, 454–476.
- Netto, R.G., Rossetti, D.F., 2003. Ichnology and salinity fluctuations a case study in the Early Miocene (Lower Barreiras succession) of São Luís Basin, Maranhão, Brazil. *Revista Brasileira de Paleontologia* 6, 5–18.
- Nio, S.D., Yang, C., 1991. Diagnostic attributes of clastic tidal deposits: a review. In: Reinson, G.E., Zaitlin, B.A., Rahmani, R.A. (Eds.), *Clastic Tidal Sedimentology*. Canadian Society of Petroleum Geologists, Memoir 16, 3–28.
- Nøttvedt, A., Kreisa, R.D., 1987. Model for the combined-flow origin of hummocky cross-stratification. *Geology* 15, 357–361.
- Orton, G.J., Reading, H.G., 1993. Variability of delta processes in terms of sediment supply, with particular emphasis on grain size. *Sedimentology* 40, 475–512.
- Pemberton, S.G., Frey, R.W., 1985. The *Glossifungites* ichnofacies: modern examples from the Georgia coast, USA. In: Curran, H.A. (Ed.), *Biogenic Structures: Their Use in Interpreting Depositional Environments*. Society of Economic Paleontologists and Mineralogists, Special Publication 35, 237–259.
- Pemberton, S.G., Wightman, D.M., 1992. Ichnological characteristics of brackish water deposits. In: Pemberton, S.G. (Ed.), *Applications of Ichnology to Petroleum Exploration: A Core Workshop*. Society of Economic Paleontologists and Mineralogists, Core Workshop 17, 141–167.
- Pemberton, S.G., MacEachern, J.A., Frey, R.W., 1992a. Trace fossil facies models: environmental and allostratigraphic significance. In: Walker, R.G., James, N.P. (Eds.), *Facies Models Response to Sea Level Changes*. Geological Association of Canada, St Johns, Newfoundland, pp. 47–72.
- Pemberton, S.G., Reinson, G.E., MacEachern, J.A., 1992b. Comparative ichnological analysis of Late Albian estuarine valley-fill and shelf-shoreface deposits, Crystal Viking Field, Alberta. In: Pemberton, S.G. (Ed.), *Applications of Ichnology to Petroleum Exploration: A Core Workshop*. Society of Economic Paleontologists and Mineralogists, Core Workshop 17, 291–317.
- Pemberton, S.G., MacEachern, J., Ranger, M.J., 1992c. Ichnology and event stratigraphy: the use of trace fossils in recognizing tempestites. In: Pemberton, S.G. (Ed.), *Applications of Ichnology to Petroleum Exploration*. Society of Economic Paleontologists and Mineralogists, Core Workshop 17, 85–117.
- Pemberton, S.G., Spila, M., Pulham, A.J., Saunders, T., MacEachern, J.A., Robbins, D., Sinclair, I.K., 2001. Ichnology and sedimentology of shallow to marginal marine systems. *Geological Association of Canada, Short Course Notes* 15, 343 pp.
- Petri, S., Fúlfaro, V.J., 1983. *Geologia do Brasil*. Editora da Universidade de São Paulo, São Paulo, 631 pp.
- Plint, A.G., Norris, B., 1991. Anatomy of a ramp margin sequence: facies successions, paleogeography and sediment dispersal patterns in the Muskiki and Marshybank formations, Alberta Foreland Basin. *Canadian Society of Petroleum Geologists, Bulletin* 39, 18–42.
- Plint, A.G., Walker, R.G., 1987. Cardium Formation 8. Facies and environments of the Cardium shoreline and coastal plain in the Kakwa Field and adjacent areas, northwestern Alberta. *Canadian Society of Petroleum Geologists, Bulletin* 35, 48–64.
- Price, L.I., 1960. Dentes de Theropoda num testemunho de sonda no Estado do Amazonas. *Anais da Academia Brasileira de Ciências* 32, 79–84.
- Raaf, J.M.F., Boersma, J.R., van Gelder, A., 1977. Wave-generated structures and sequences from a shallow marine succession, Lower Carboniferous, County Cork, Ireland. *Sedimentology* 24, 451–483.
- Rossetti, D.F., 1997. Internal architecture of mixed tide and storm-influenced deposits: an example from the Alcântara Formation, northern Brazil. *Sedimentary Geology* 114, 163–188.
- Rossetti, D.F., 1998. Facies architecture and sequential evolution of an incised-valley estuarine fill: the Cujupe Formation (Upper Cretaceous to ?Lower Tertiary), São Luís Basin, northern Brazil. *Journal of Sedimentary Research* 68, 299–310.
- Rossetti, D.F., Góes, A.M., 2001. Imaging Upper Tertiary to Quaternary deposits from northern Brazil applying ground-penetrating radar. *Revista Brasileira de Geociências* 31, 195–202.
- Rossetti, D.F., Góes, A.M., 2004. Caracterização paleoambiental de depósitos albianos na borda sul da Bacia de São Luís-Grajaú: modelo de delta fluvial influenciado por tempestade. *Revista Brasileira de Geociências* 3, 299–312.
- Rossetti, D.F., Santos Jr., A.E., 2003. Events of soft sediment deformation and mass failure in Upper Cretaceous estuarine deposits (Cameté Basin, northern Brazil) as evidence for seismic activity. *Sedimentary Geology* 161, 107–130.
- Rossetti, D.F., Truckenbrodt, W., Góes, A.M., 1989. Estudo paleoambiental e estratigráfico dos Sedimentos Barreiras e Pós-Barreiras na região Bragantina, nordeste do Pará. *Boletim do Museu Paraense Emílio Goeldi. Série Ciências da Terra* 1, 25–74.
- Rossetti, D.F., Góes, A.M., Truckenbrodt, W., Anaisse Jr., J., 2000. Tsunami-induced large-scale scour-and-fill structures in Albian to Cenomanian deposits of Grajaú Basin, northern Brazil. *Sedimentology* 47, 309–323.
- Shanley, K.W., McCabe, P.J., Hettinger, R.D., 1992. Tidal influence in Cretaceous fluvial strata from Utah: a key to sequence stratigraphic interpretation. *Sedimentology* 39, 905–930.
- Sheenan, P.M., Schiefelbein, D.R.J., 1984. The trace fossil *Thalassinoides* from the Upper Ordovician of the eastern Great Basin: deep burrowing in the Early Paleozoic. *Journal of Paleontology* 58, 440–447.
- Shepard, F.P., 1955. Delta front valleys bordering Mississippi distributaries. *Geological Society of America, Bulletin* 66, 1489–1498.
- Shukla, U.K., Kotlia, B.S., Mathur, P.D., 2002. Sedimentation pattern in a trans-Himalayan Quaternary lake at Lamayuru (Ladakh), India. *Sedimentary Geology* 148, 405–424.
- Simpson, E.L., Eriksson, K.A., 1991. Depositional facies and controls on para-sequence development in siliciclastic tidal deposits from the Lower Proterozoic, Upper Mount Guide Quartzite, Mount Isa Inlier, Australia. In: Smith, Reinson, G.E., Rahmani, R.A. (Eds.), *Clastic Tidal Sedimentology*. Canadian Society of Petroleum Geologists, Memoir 16, 371–387.
- Swift, D.J.P., Figueiredo Jr., Freeland, G.L., Oertel, G.F., 1983. Hummocky cross-stratification and megaripples: a geological double standard? *Journal of Sedimentary Petrology* 53, 1295–1317.
- Tassinari, C.C.G., Macambira, M.J.B., 1999. Geochronological provinces of the Amazonian Craton. *Episodes* 22, 174–182.
- Tassinari, C.C.G., Bittencourt, J.S., Geraldés, M.C., Macambira, M.J.B., Lafon, J.M., 2000. The Amazon Craton. In: Cordani, U.G., Thomaz-Filho, A., Campos, D.A. (Eds.), *Tectonic Evolution of South America*. 1654
1655
1656
1657
1658
1659
1660
1661
1662
1663
1664
1665
1666
1667
1668
1669
1670
1671
1672
1673
1674
1675
1676
1677
1678
1679
1680
1681
1682
1683
1684
1685
1686
1687
1688
1689
1690
1691
1692
1693
1694
1695
1696
1697
1698
1699
1700
1701
1702
1703
1704
1705
1706
1707
1708
1709
1710

- 1711 Academia Brasileira de Ciências, Special Publication of the 31th International Geological Congress, pp. 41–95. 1724
- 1712 1725
- 1713 Teixeira, W., Tassinari, C.C.G., Cordani, U.G., Kawashita, K., 1989. A review 1726
- 1714 of the geochronology of the Amazonian Craton: tectonic implications. *Precambrian Research* 42, 213–227. 1727
- 1715 1728
- 1716 Uchman, A., 1995. Taxonomy and palaeoecology of flysch trace fossils: the 1729
- 1717 Marnoso-arenacea Formation and associated facies (Miocene, Northern 1730
- 1718 Apennines, Italy). *Beringeria* 15, 3–115. 1731
- 1719 Visser, M.J., 1980. Neap-spring cycles reflected in Holocene subtidal large- 1732
- 1720 scale bedform deposits, a preliminary note. *Geology* 8, 543–546. 1733
- 1721 Walker, R.G., 1984. Shelf and shallow marine sands. In: Walker, R.G. 1734
- 1722 (Ed.), *Facies Models*. Geosciences Canada Reprint Series 1, 1735
- 1723 141–170. 1736
- Watkins, R., Coorough, P.J., 1997. Silurian *Thalassinoides* in an offshore carbonate community, Wisconsin, USA. *Palaeogeography, Palaeoclimatology, Palaeoecology* 129, 109–117.
- Wightman, D.M., Pemberton, S.G., Singh, C., 1987. Depositional modeling of the Upper Mannville (Lower Cretaceous), east central Alberta: implications for the recognition of brackish water deposits. In: Tillman, R.W., Weber, K.J. (Eds.), *Reservoir Sedimentology*. Society of Economic Paleontologists and Mineralogists, Special Publication 40, 189–220.
- Wignall, P.B., 1991. Dysaerobic trace fossils and ichnofabrics in the Upper Jurassic Kimmeridge Clay of southern England. *Palaios* 6, 264–270.
- Yang, C.S., Nio, S.D., 1985. The estimation of paleohydrodynamic processes from subtidal deposits using time series analysis methods. *Sedimentology* 32, 41–57.

UNCORRECTED PROOF